



WORLD
RESOURCES
INSTITUTE

Looking back. Moving ahead.

CARPE II → CARPE III

USAID CARPE partners meeting 27 January 2014

Matthew Steil, Congo Basin Manager, WRI's Forest Initiative

Overview

- WRI institutional presentation and focus
- Main focus/objectives under CARPE II
- Main achievements under CARPE II
- Outline of SCAEMPS approach
- Advice for CARPE III effectiveness



World Resources Institute (WRI)

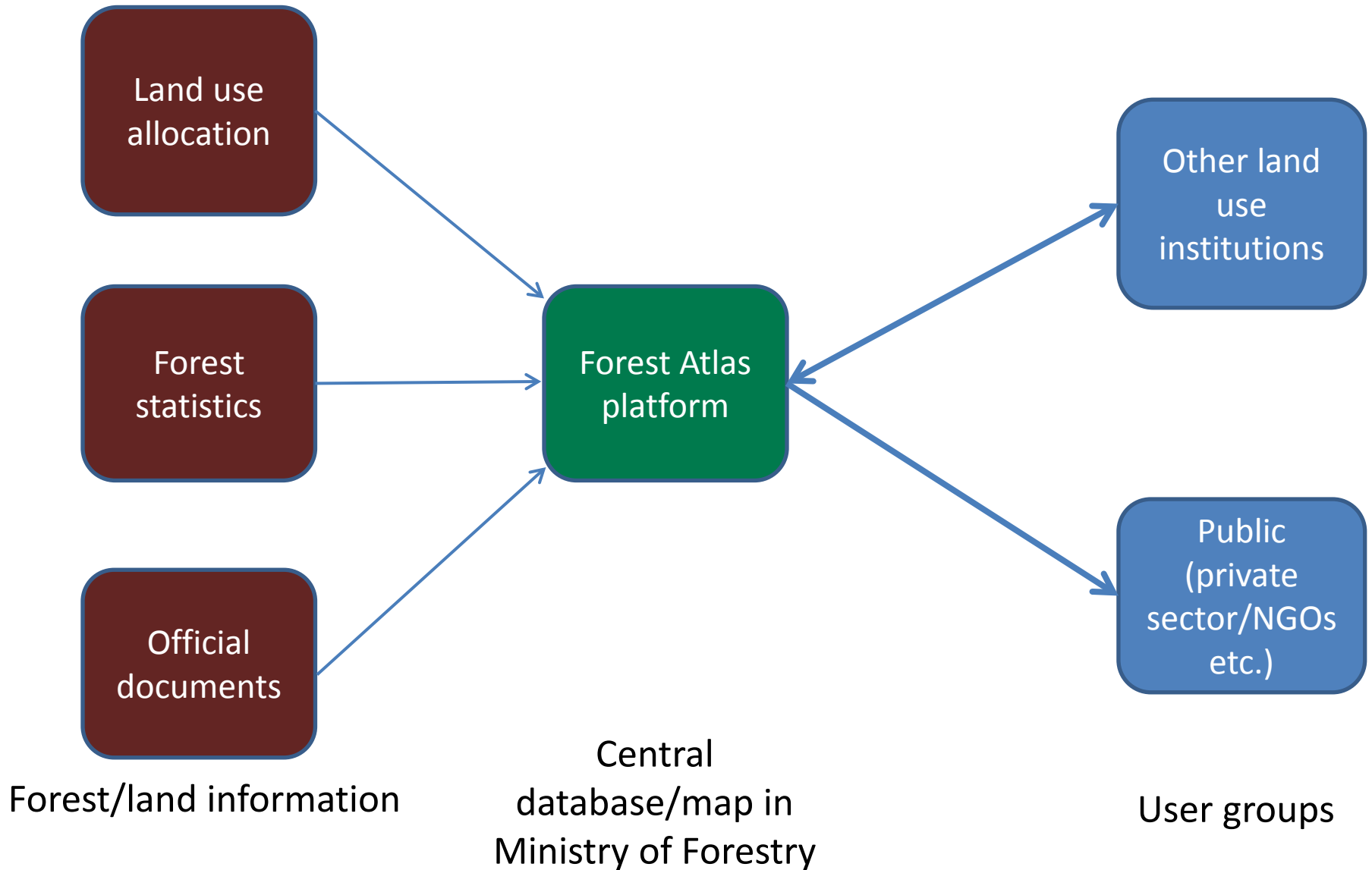
- Global research organization working at intersection between environment and development
- Focus on climate, energy, food, forests, water, cities/transport, governance
- Central Africa = forests and governance
- WRI as “cross cutting” organization in CARPE II



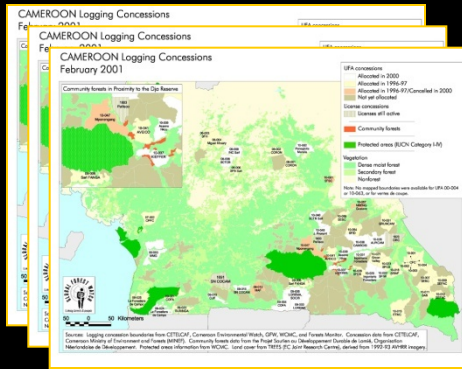
CARPE II focus

- IRs 3.2, 3.3 and 3.4
- Improve quality/access to forest information
- Build information management systems
- Invest in local capacity

Forest Atlas Structure

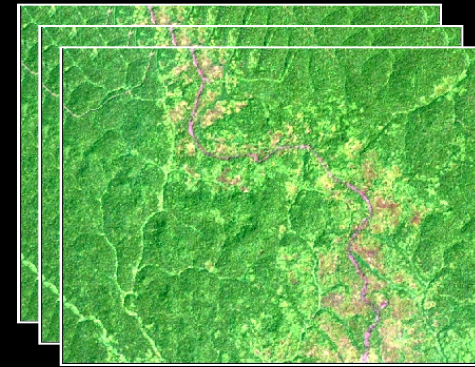


Forest Atlases

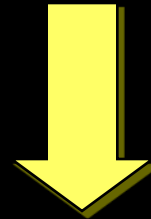


**Reference
information**

+



**Forest use
information**



Land use planning

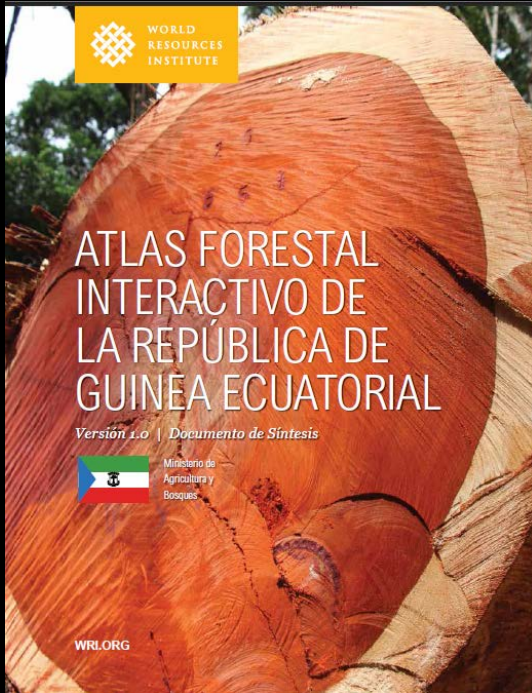
Monitor resource extraction

Address conflicting land use claims

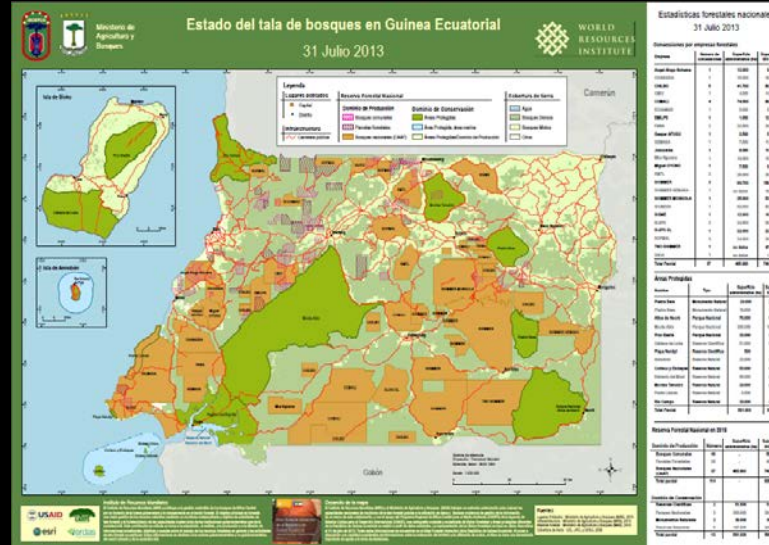
Increase measures of accountability

Improve overall forest management and governance

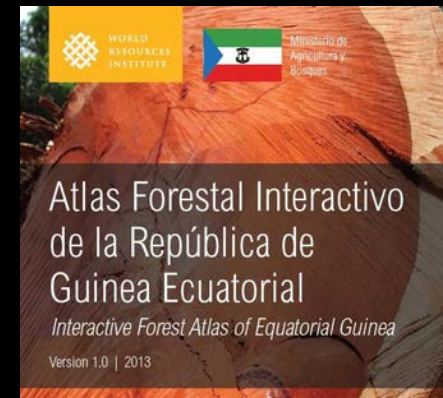
CARPE II: Results



Rapport



Poster

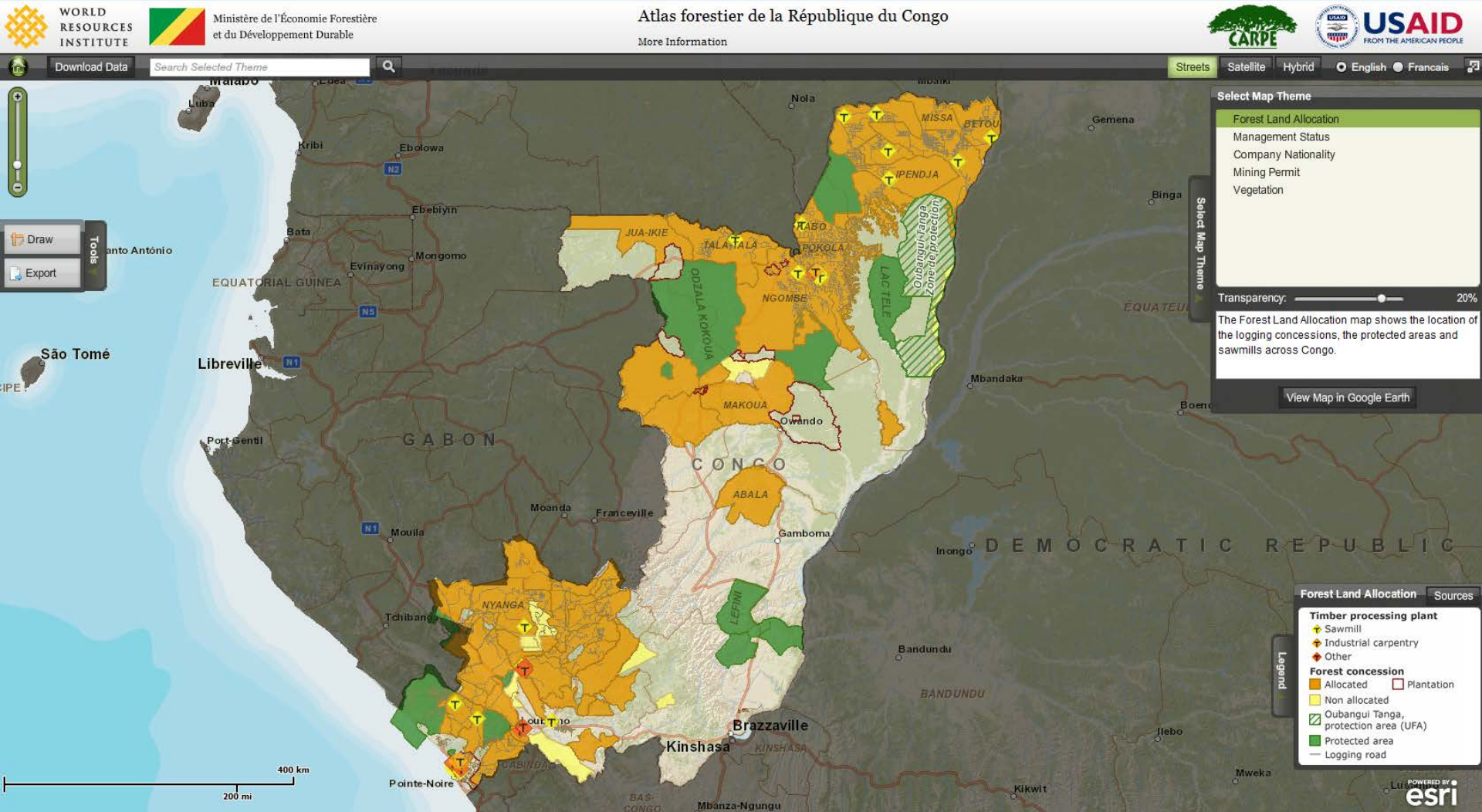


DVD

Internet:

<http://www.wri.org/our-work/project/congo-basin-forest-atlases/>

CARPE II: Results





WHAT WE DO

Topics

Project Directory

Top Outcomes

Our Approach

Support our Work

Congo Basin Forest Atlases

The Forest Atlas is a dynamic tool that helps decision-makers in the region achieve sustainable management of forest resources through strengthened land use planning and monitoring.

The Congo Basin Forest Atlases are a living forest information system, merging the latest technology in remote sensing and GIS with ground-truthing to monitor and sustainably manage forests. WRI works in the following Congo Basin countries: [Cameroon](#), [Central African Republic](#), [Congo](#), [Democratic Republic of Congo](#), [Equatorial Guinea](#), and [Gabon](#).



Project Home

Cameroon

Central African Republic

Congo

DRC

Equatorial Guinea

Gabon

BLOG

Equatorial Guinea Increases Protected Forests by 63 Percent, Shows New Atlas

November 13, 2013

PUBLICATIONS



Interactive Forest Atlas of Equatorial Guinea

PUBLICATION



Interactive Forest Atlas of Congo - Atlas Forestier Interactif du Congo (Version 3.0)

RELATED MAPS & DATA



Gabon: Évolution de l'Approbation des CFAD

MAP

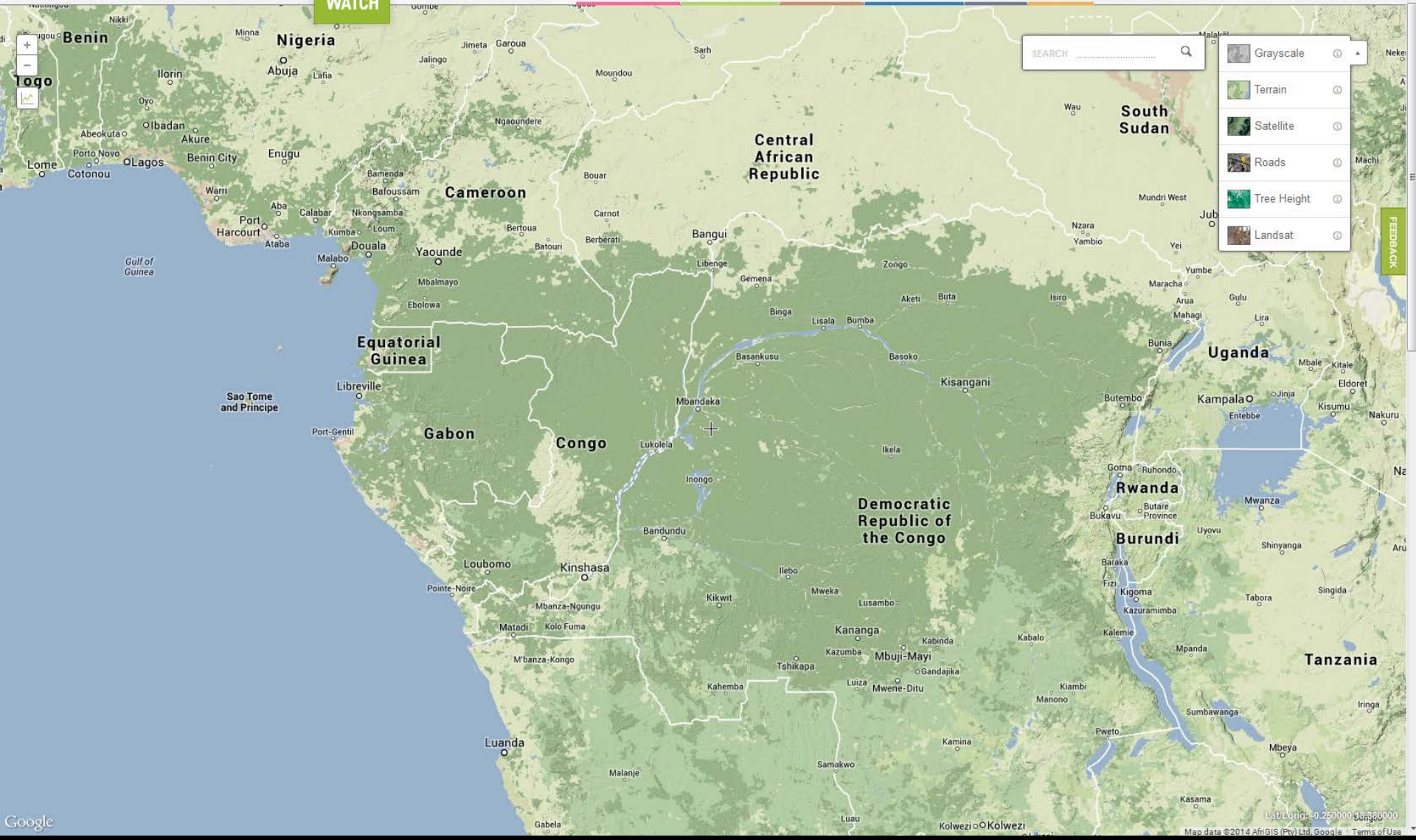


La République Démocratique du Congo

CARPE II: Results (capacity building)

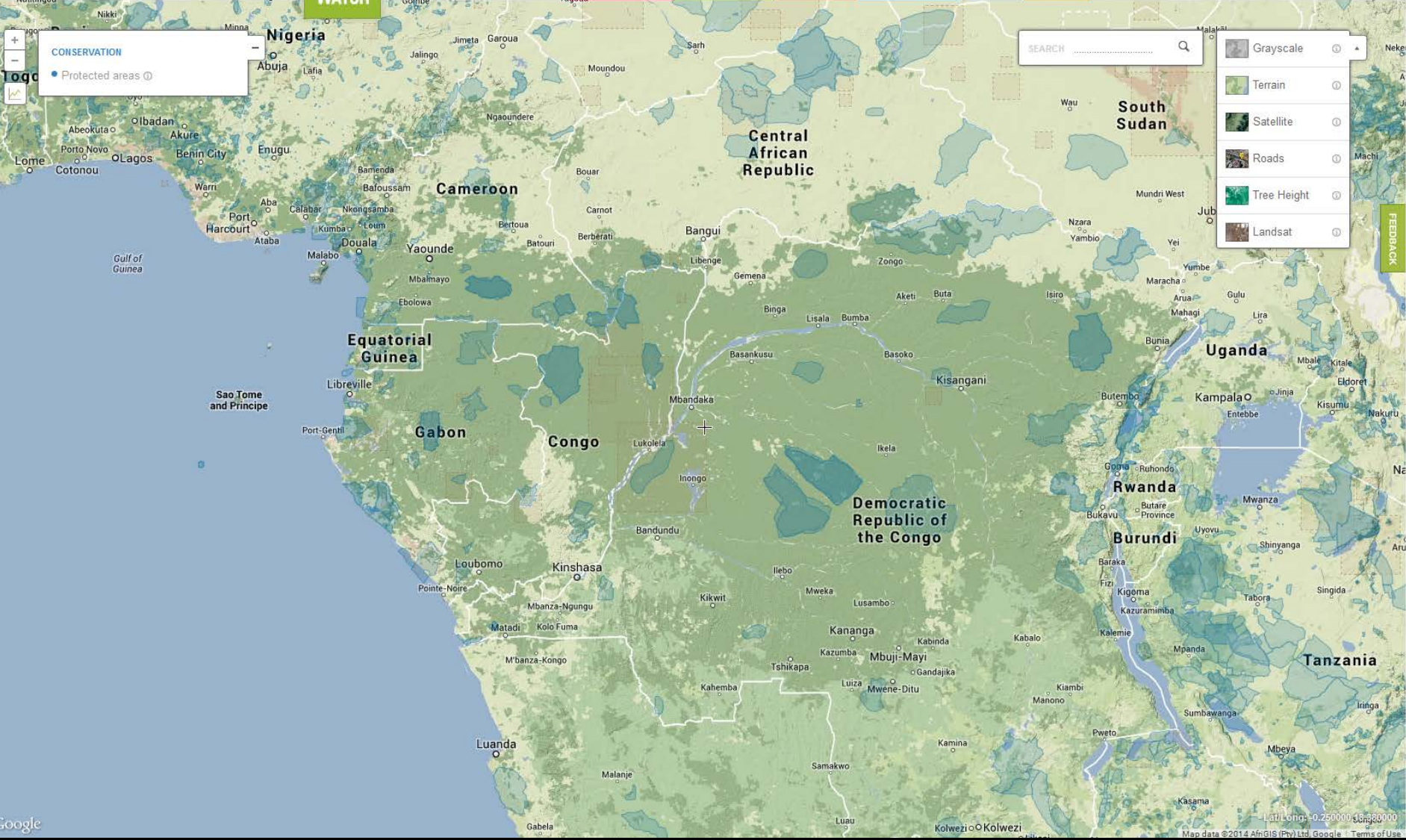
1015 forest stakeholders received technical training (> 3 days)





SEARCH [input field] [magnifying glass icon]

- Grayscale
- Terrain
- Satellite
- Roads
- Tree Height
- Landsat



CONSERVATION

- Protected areas

SEARCH

- Grayscale
- Terrain
- Satellite
- Roads
- Tree Height
- Landsat

FEEDBACK

FOREST USE

- Oil palm

CONSERVATION

- Protected areas

SEARCH

Grayscale

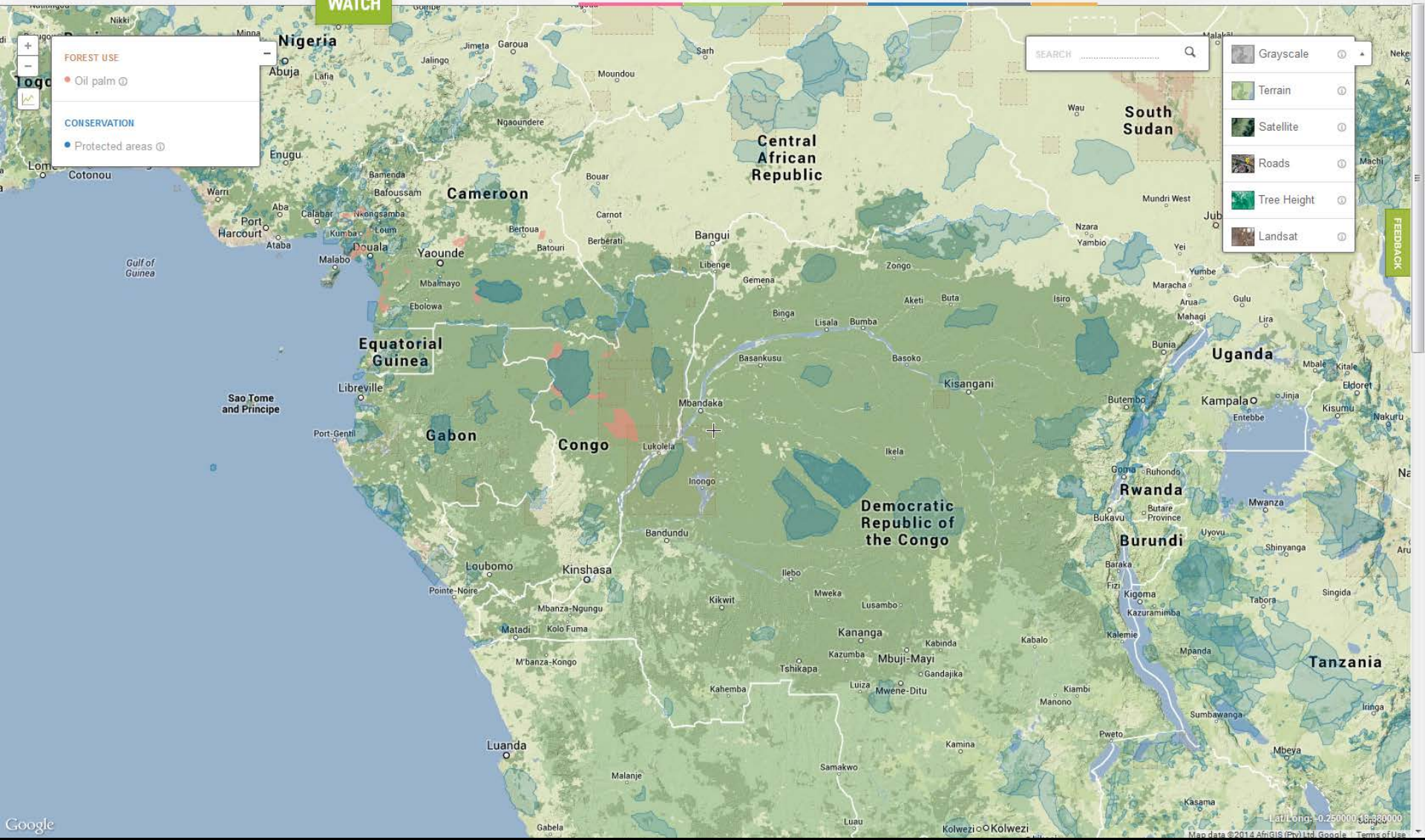
Terrain

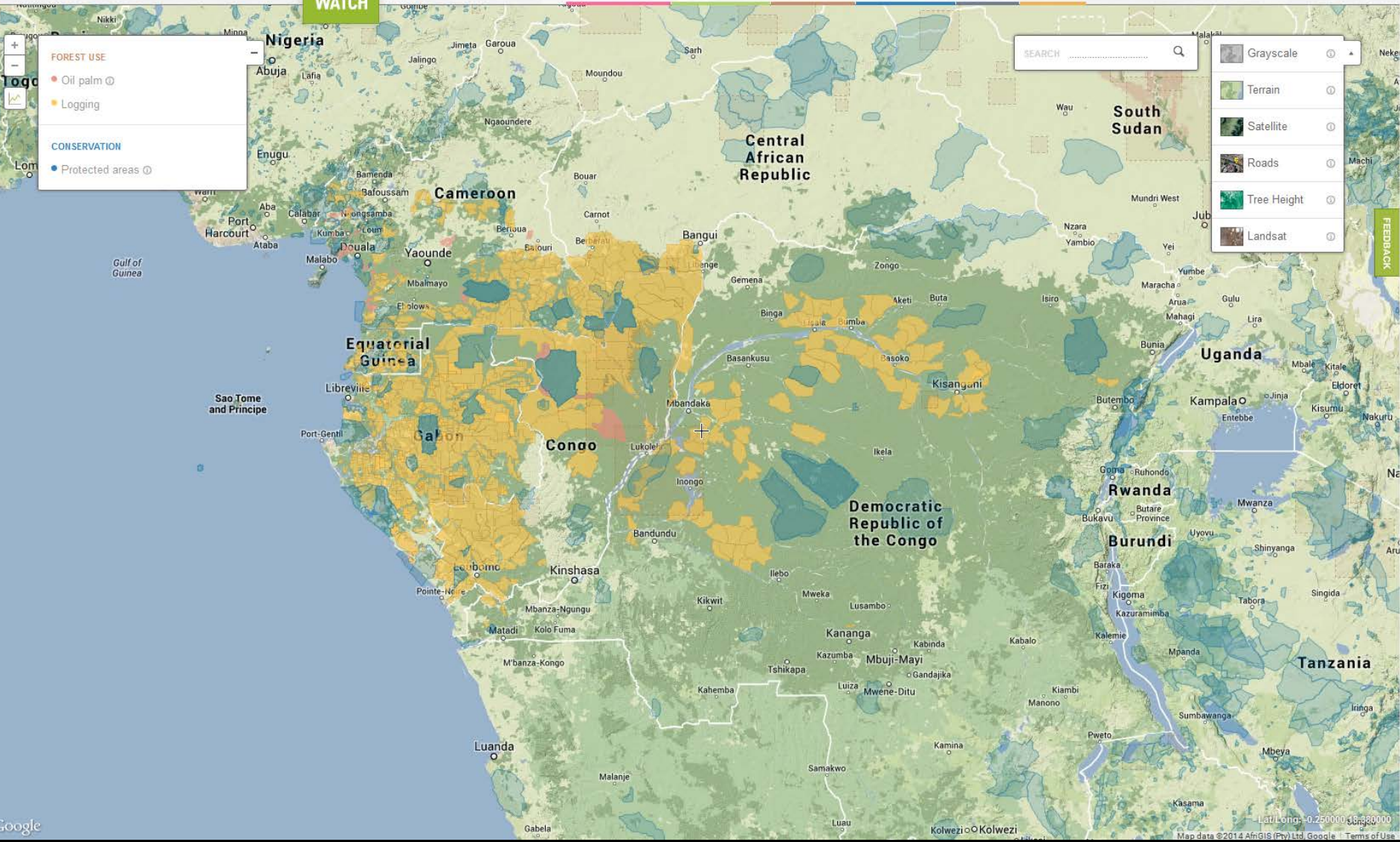
Satellite

Roads

Tree Height

Landsat





FOREST USE

- Oil palm
- Logging

CONSERVATION

- Protected areas

SEARCH

Grayscale

Terrain

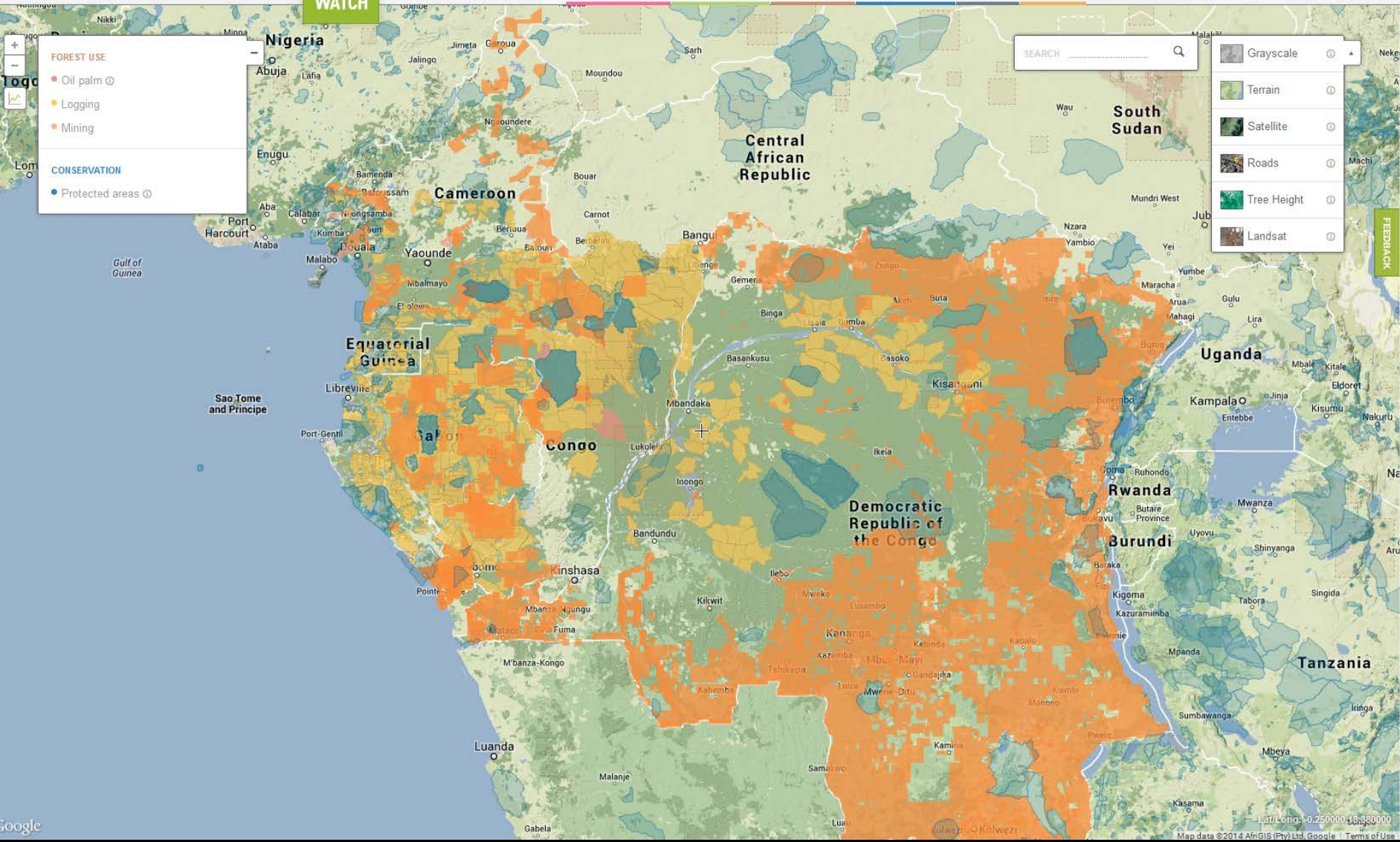
Satellite

Roads

Tree Height

Landsat

FEEDBACK



FOREST USE

- Oil palm
- Logging
- Mining

CONSERVATION

- Protected areas

SEARCH

Grayscale

Terrain

Satellite

Roads

Tree Height

Landsat

FEEDBACK

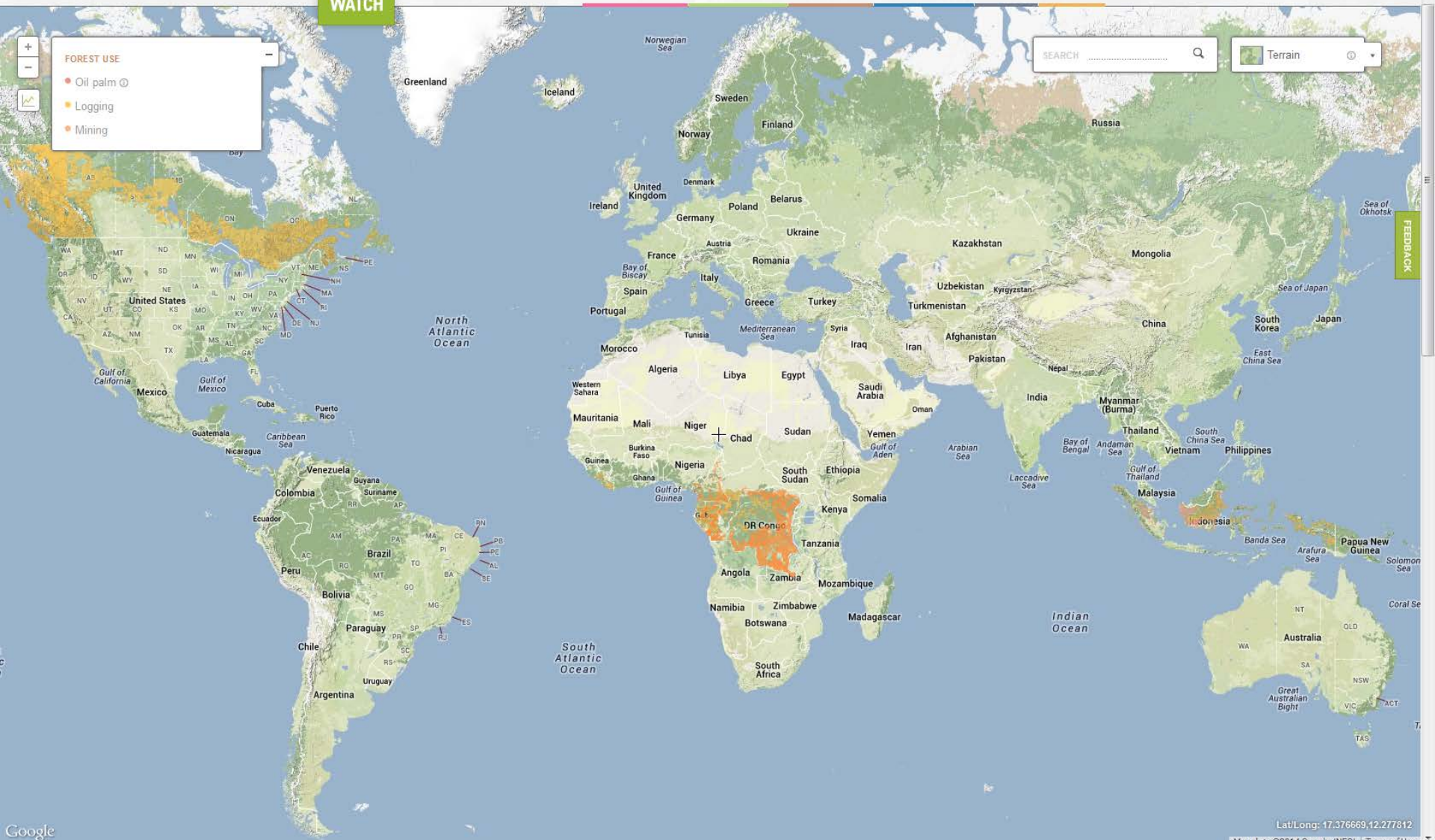


FOREST USE

- Oil palm
- Logging
- Mining

SEARCH

Terrain



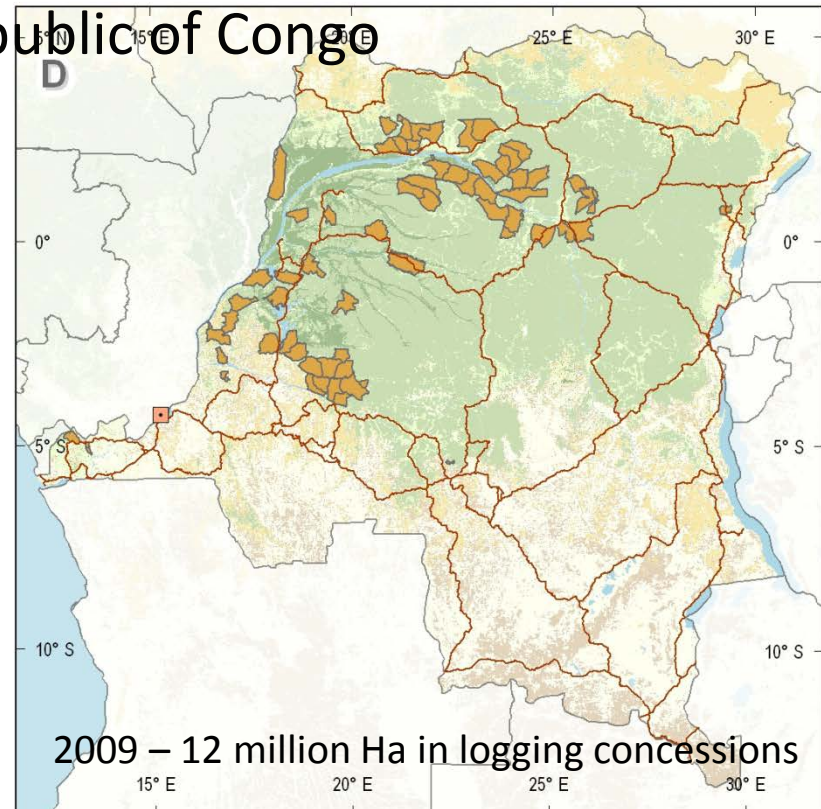
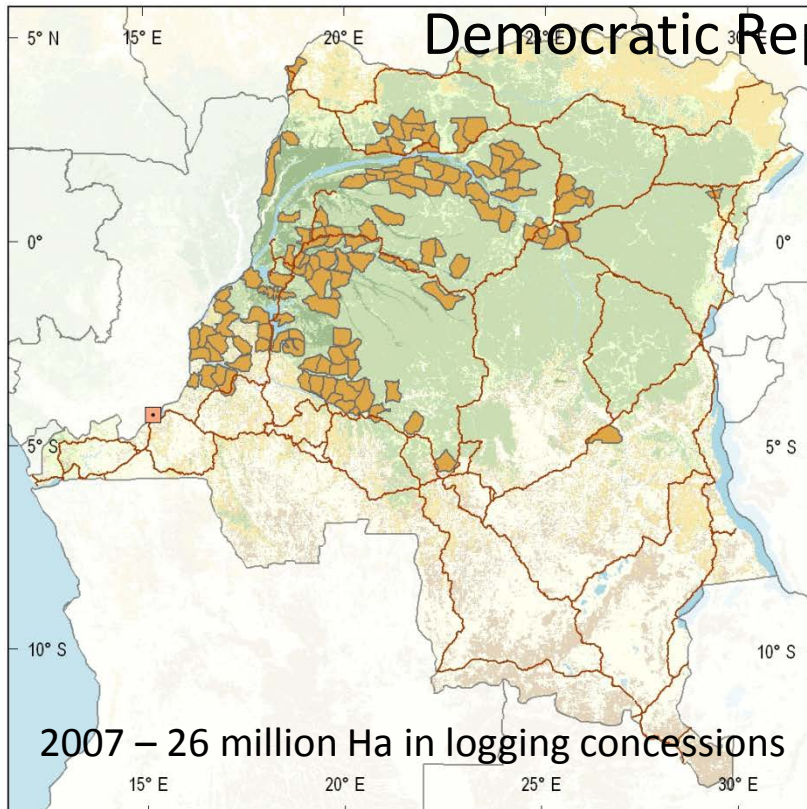
FEEDBACK



CARPE II success stories

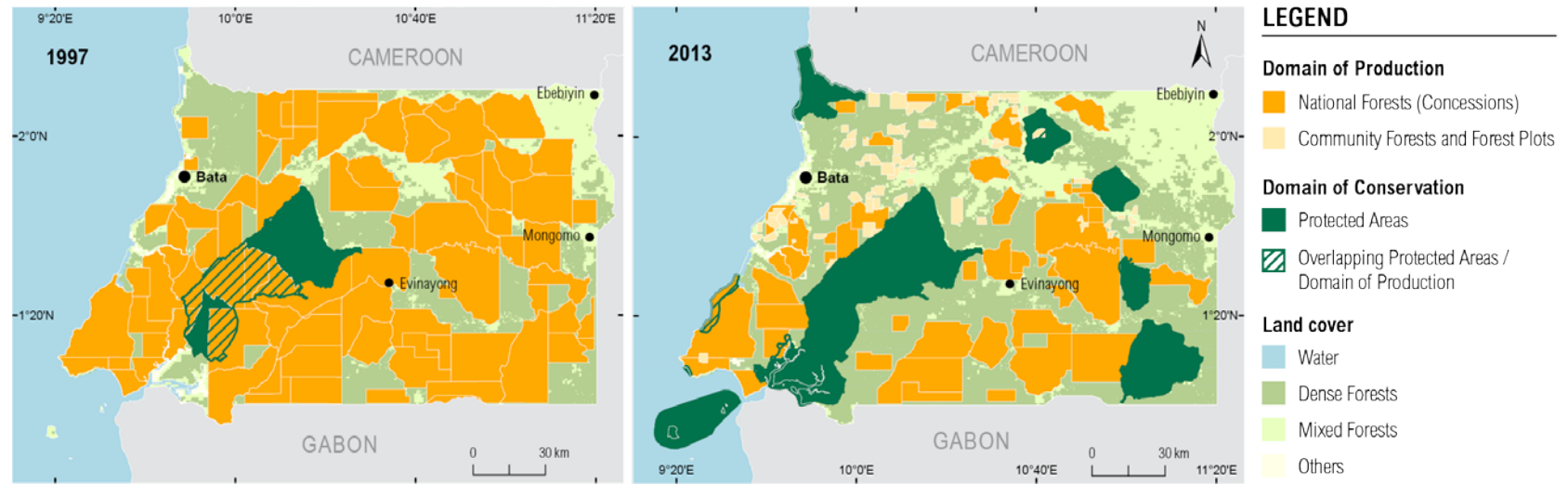
- Significant change in mindset, re: transparency
- Vast increase in access to forest information
- Measured reductions in illegal logging
- Improved coordination between land use administrations and partners
- Substantial increases in local technical capacity
- Significant increases in Protected Area network, Forest Concessions under management plans and/or Certification
- Notable rise in areas under Community Forests (Cameroon) and out of Forest Concessions (DRC)

DRC: Reduced logging



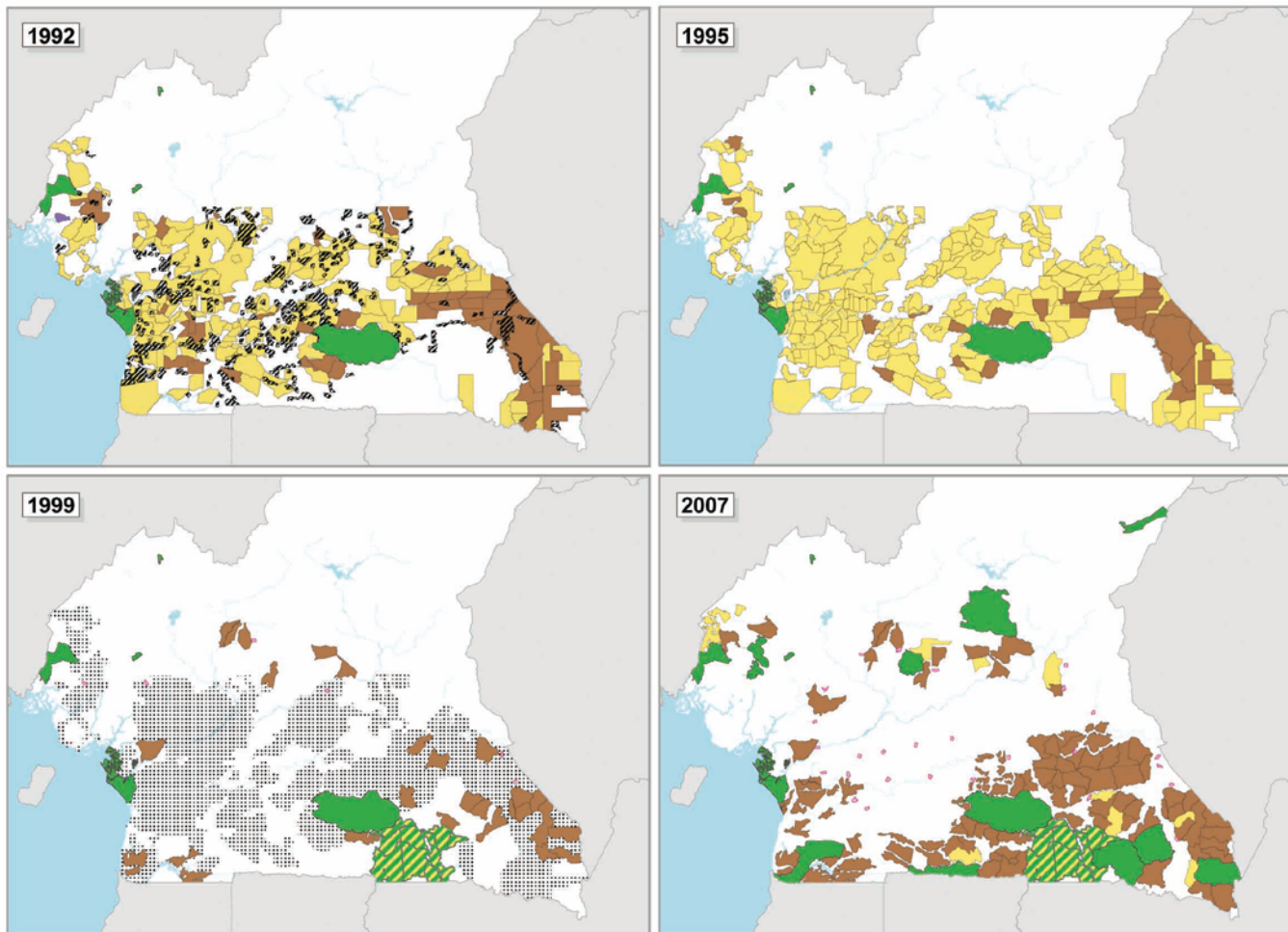
Eq. Guinea: increase in PAs

Land Use Change in the National Forest Reserve, 1997-2013



Sources: Domain of Conservation and Production: Ministry of Agriculture and Forestry (MAB), 2013; Vegetation: UCL, JRC, and SDSU, 2008.

Map 6. Status of Logging Titles and Protected Areas for 1992, 1995, 1999, and 2007



Data sources:

- Logging titles and other uses (1995, 1999, and 2007): Interactive Forestry Atlas of Cameroon, Version 2 (Cameroon Ministry of Forestry and Wildlife / World Resources Institute, 2007).
- Forest licences and "petits titres" (1992): UNEP-WCMC, 1996, digitized by WRI, 2008.
- Protected areas: Interactive Forestry Atlas of Cameroon, Version 2 (Cameroon Ministry of Forestry and Wildlife / World Resources Institute, 2007), updated with "fiche synthétique des aires protégées du Cameroun" (FORAC, 2007) and World Database on Protected Areas (UNEP-WCMC, 2007).
- Cameroon administrative boundaries, hydrology, settlements, and coastline: Interactive Forestry Atlas of Cameroon, Version 2 (Cameroon Ministry of Forestry and Wildlife / World Resources Institute, 2007).

1. Forest Management Units.
2. Note: "Petits titres" overlap with licences.
3. "Petits titres" not available.
4. Note: Data incomplete.

Valid logging titles	1992		1995		1999		2007	
	Area (hectares)	Percentage of Total Area	Area (hectares)	Percentage of Total Area	Area (hectares)	Percentage of Total Area	Area (hectares)	Percentage of Total Area
Licences: 1992, 1995 FMUs¹: 1999, 2007								
Active	2,898,700	22.1	1,910,400	16.8	1,693,600	99.1	5,557,200	88.6
Not active	7,155,000	64.5	9,458,000	83.2	-	-	642,500	10.2
Status unknown	20,100	0.2	-	-	-	-	-	-
"Petits titres" ²	1,723,600	13.2	Unknown ³	Unknown ³	-	-	Unknown ³	Unknown ³
Sales of Standing Volume (SSV)	-	-	-	-	15,900 ⁴	0.9 ⁴	71,200	1.1
Total	11,797,500	100%	11,368,400	100%	1,709,500	100%	6,270,900	100%
Conservation concessions	-	-	-	-	867,000	N/A	867,000	N/A

■ Protected areas (IUCN categories I-IV)
 Abandoned licences

CARPE II: Remaining needs

- Improve links policy \leftrightarrow monitoring
- Real time access to information
- Rich datasets, low utility
- Inclusion of all land use sectors
- Improve links between actors
- Improve policy participation

CARPE III → SCAEMPS

Strengthening Central Africa Environmental Management and Policy Support (SCAEMPS)

- IR 3: Policy and regulatory environments supporting sustainable forest and biodiversity conservation established
- IR 4: Capacity increased and strengthened at regional, national and local levels to monitor forest cover change, greenhouse gas emissions and biodiversity

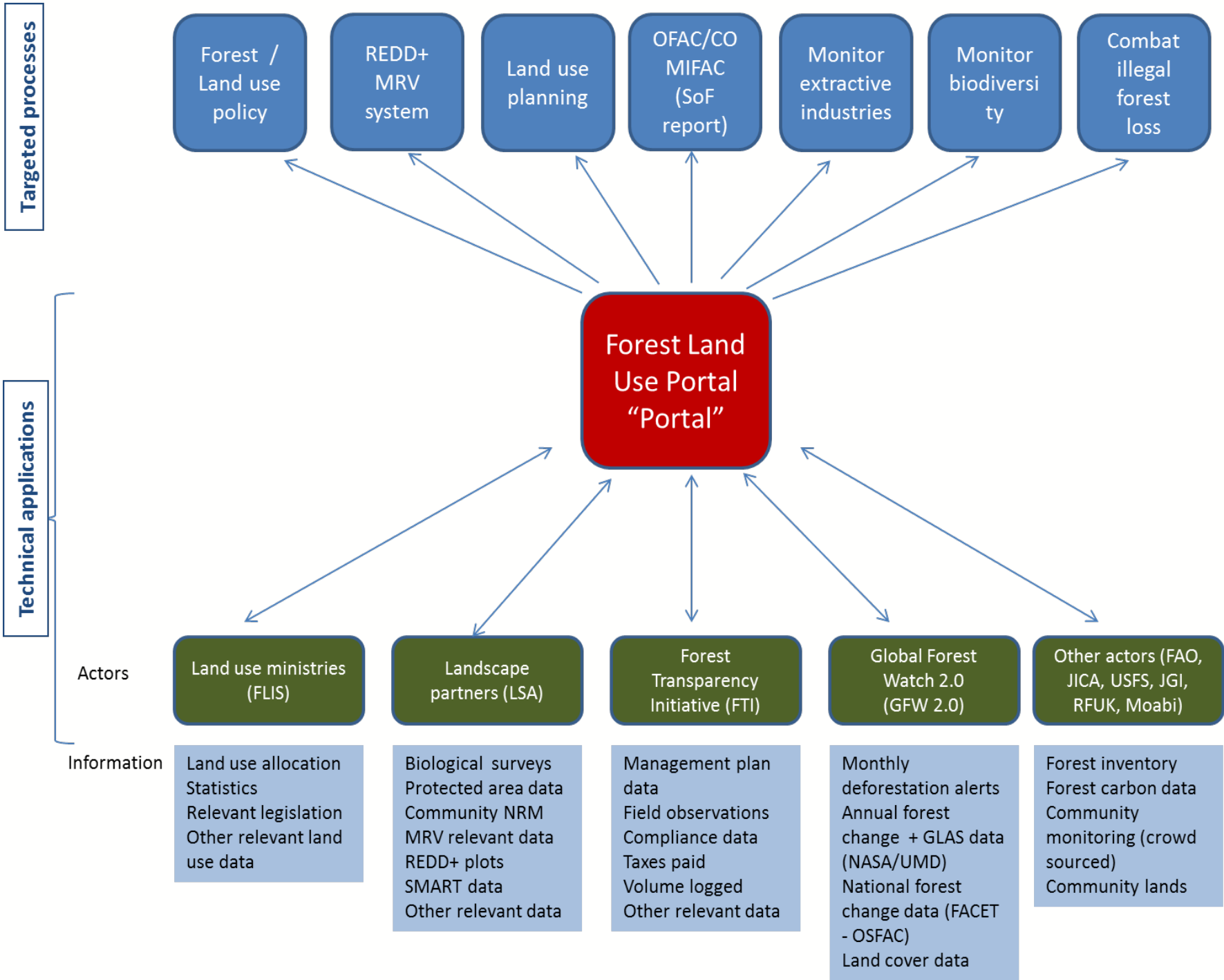
SCAEMPS implementing partners



- Major program partners: MECNT, MEFDD, CODELT, OGF, CAGDF, UMD/NASA, OSFAC, FAO
- Steering committee

SCAEMPS: Program objectives

1. Increase access to and application of coordinated, high quality, and timely information about forests and land use for NRM and REDD+ policy implementation.
2. Build the capacity of government, civil society, and forest communities to develop, implement, and monitor NRM and REDD+ policies through open and inclusive processes.



Targeted processes

Technical applications

Actors

Information

Forest / Land use policy

REDD+ MRV system

Land use planning

OFAC/CO MIFAC (SoF report)

Monitor extractive industries

Monitor biodiversity

Combat illegal forest loss

Forest Land Use Portal "Portal"

Land use ministries (FLIS)

Landscape partners (LSA)

Forest Transparency Initiative (FTI)

Global Forest Watch 2.0 (GFW 2.0)

Other actors (FAO, JICA, USFS, JGI, RFUK, Moabi)

Land use allocation
Statistics
Relevant legislation
Other relevant land use data

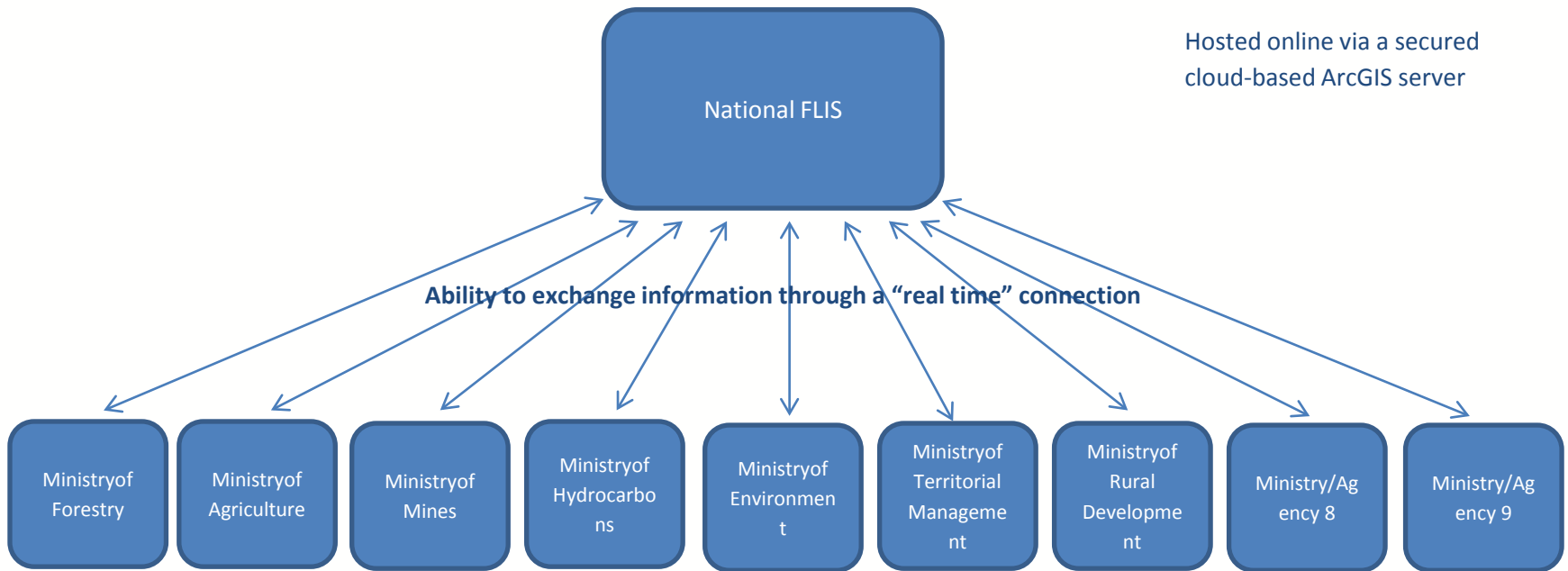
Biological surveys
Protected area data
Community NRM
MRV relevant data
REDD+ plots
SMART data
Other relevant data

Management plan data
Field observations
Compliance data
Taxes paid
Volume logged
Other relevant data

Monthly deforestation alerts
Annual forest change + GLAS data (NASA/UMD)
National forest change data (FACET - OSFAC)
Land cover data

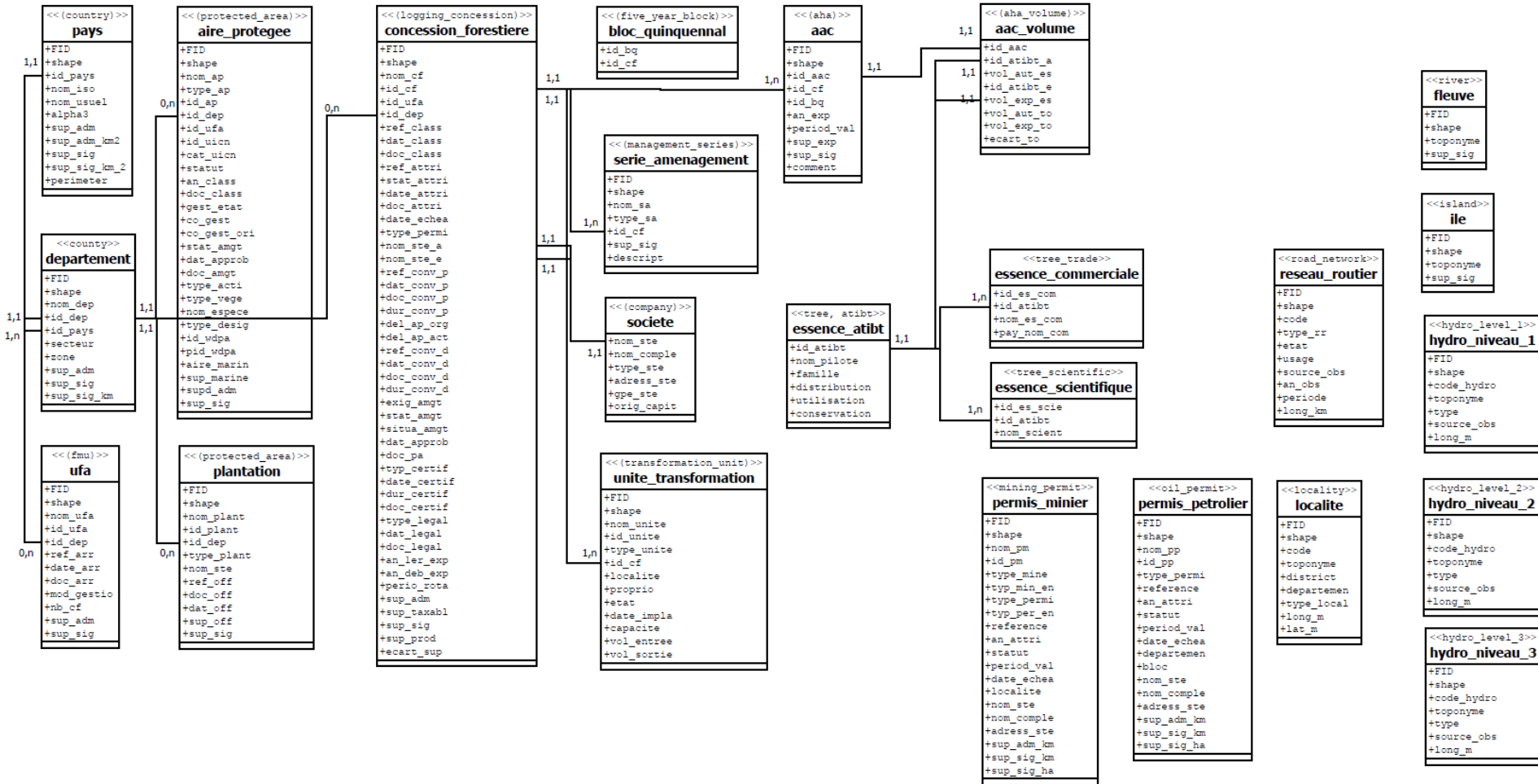
Forest inventory
Forest carbon data
Community monitoring (crowd sourced)
Community lands

Forest Land use Information System (FLIS)



Linking all land use ministries through a single integrated GIS platform

Congo Atlas database structure



The Landscape Application (LSA)

Enabling landscape actors to collect, manage and share information across landscapes and between landscapes and national actors

Possible content:

- Biological surveys
- Wildlife crime data
- SMART datasets
- CBNRM information
- Ground truthed forest clearing or MRV datasets
- Land use planning

The Forest Transparency Initiative (FTI)

Tracking indicators on compliance of extractive industries (timber)

Possible content:

- Monitor logging management plan
- Track anti-poaching efforts in concessions
- Legality indicators linked to Lacey Act, EUTR, FLEGT
- Community and social contracts

Firm: ASIA CONGO INDUSTRIE

Concession Name Clear

Firm Clear

- CIB (4)
- FORALAC (4)
- ASIA CONGO INDUSTRIE (4)
- CIBN (3)
- SICOFOR (3)
- AFRIWOOD Industries (2)
- Likouala Timber (2)
- BTC Sarl (2)
- TAMAN INDUSTRIE (2)
- COFIBOIS (2)
- TWINS Sarl (1)
- CITB QUATOR (1)
- CONGO DEJA / WOOD INDUSTRY (1)
- MAMBILI - WOOD (1)
- MILLION WELL CONGO BOIS (1)
- MOKABI (1)
- TRABEC (1)
- SADEF-CONGO (1)
- SEFYD (1)
- ITBL (1)



Showing: 4 concessions

+ Add Concession

Country	Concession Name	Firm	Area (ha)
Congo	BAMBAMA	ASIA CONGO INDUSTRIE	145000
Congo	LOUVAKOU	ASIA CONGO INDUSTRIE	124280
Congo	MATSANGA	ASIA CONGO INDUSTRIE	139000
Congo	NGONGO-NZAMBI	ASIA CONGO INDUSTRIE	15274

WHAT'S THIS?

The Forest Transparency Initiative is a dynamic online database for site and company level information.



ASIA CONGO INDUSTRIE

[Upload Logo](#)

Name ASIA CONGO INDUSTRIE

HOME/CORPORATE

Email (corporate) Email address (corporate)

Address (corporate) Physical address (corporate)

City (corporate) KUANTAN

Phone (corporate) +60129467400/+2425243688

Province (corporate) Province (corporate)

Postal Code (corporate) Postal Code (corporate)

Country (corporate) Malaysia

URL (corporate) URL (corporate)

LOCAL

Email (local) Email address (local)

Address (local) BP. 272 / 302

City (local) Dolisie

Phone (local) Phone (local)

Province (local) Province (local)



Firm ASIA CONGO INDUSTRIE

Concession

BAMBAMA

Details

FLEGT

Management

Taxes

Observations

LOGGING FIRMASIA CONGO INDUSTRIE KUANTAN
Malaysia[Choose different firm](#)**LEASING FIRM**ASIA CONGO INDUSTRIE KUANTAN
Malaysia[Choose different firm](#)**GEOGRAPHY****Location**

Area	Official	<input type="text" value="145,000"/>	ha
	GIS	<input type="text" value="144,029"/>	ha
	Taxable	<input type="text"/>	ha
	Productive	<input type="text"/>	ha

Neighboring Protected Areas [+ Add protected area...](#)**CONCESSION**Title Reference [Add reference document...](#)Allocation Reference [Clear upload](#)[CG_ARR_1913_AV_Asia Congo.pdf.pdf](#)Classification Reference [Clear upload](#)[CG_ARR_512_AsiaCongoInd.pdf.pdf](#)Concession Period to



Firm

ASIA CONGO INDUSTRIE

Concession

BAMBAMA

Details

FLEGT

Management

Taxes

Observations

- 1 Firm legality

- ▶ 1.1 Official registration
- ▶ 1.2 Firm not suspended

- 2 Logging rights

- ▶ 2.1 Certificate of exploitation
- ▶ 2.2 Periodic licenses

- 3 Social obligations

- ▶ 3.1 Stakeholder involvement
- ▶ 3.2 Respect for local populations
 - Local practices and customs
 - Local commitments
 - Compensation

- ▶ 3.3 Conflict resolution
- ▶ 3.4 Partners informed of rights
- ▶ 3.5 Workers' rights

- 4 Forest management and taxation

- ▶ 4.1 Environmental impact
- ▶ 4.2 Environmental laws
- ▶ 4.3 Management documents
- ▶ 4.4 Concession boundaries
- ▶ 4.5 Roads
- ▶ 4.6 Felling and marking
- ▶ 4.7 Abandoned timber
- ▶ 4.8 Timber processing
- ▶ 4.9 Contributions to local development
- ▶ 4.10 Tax returns
- ▶ 4.11 Taxes paid
- ▶ 4.12 Subcontracting

PRINCIPLE

3 Social obligations

The company involves civil society and local and indigenous populations in the management of its concession and respects the rights of these populations and workers.

CRITERION

3.2 Respect for local populations

The company respects the rights, customs and practices of local and indigenous populations in accordance with national legislation and regulations and international conventions.

INDICATOR

3.2.2 Local commitments

The company meets its commitments with respect to local and indigenous populations.

VERIFICATION

3.2.2.1 Terms and conditions/Memorandum of understanding

VERIFICATION

3.2.2.2 Inspection report of the Departmental Forest Economy Office

VERIFICATION

3.2.2.3 Report of the committee monitoring and reviewing the management plan

Add Verification





Forest Transparency Initiative



Firm ASIA CONGO INDUSTRIE

Concession

BAMBAMA

Details

FLEGT

Management

Taxes

Observations

Concession Level Taxes

Register

Annual Summary

Year	Taxes Accrued	Taxes Paid	Balance	% Paid
	26,498,513 XAF	20,005,943 XAF	6,492,570 XAF	75.49 %
2011	21,982,545 XAF	21,982,545 XAF	0 XAF	100.00 %
2012	85,268,479 XAF	85,298,068 XAF	-29,589 XAF	100.03 %
Total	133,749,537 XAF	127,286,556 XAF	6,462,981 XAF	95.16 %



Forest Transparency Initiative



Firm ASIA CONGO INDUSTRIE

Concession

BAMBAMA

Details

FLEGT

Management







Taxes

Observations

Concession Level Taxes

Register

Annual Summary

Date	Description	Taxes Accrued	Taxes Paid	Documentation
	Balance forward	26,498,513	20,005,943	
1 Dec 2011	Felling tax	21,982,545	21,982,545	 dec.JPG
1 Jan 2012	Felling tax	3,917,038	3,917,038	 janv.JPG
1 Feb 2012	Felling tax	13,184,556	13,184,556	 fev.JPG
1 Mar 2012	Felling tax	13,507,553	13,507,553	 mars.JPG
1 Apr 2012	Felling tax	19,830,430	19,860,019	 avr.JPG
1 May 2012	Felling tax	15,189,887	15,189,887	
1 Jun 2012	Felling tax	19,639,015	19,639,015	 juin.JPG
<i>Click to add...</i>				
		133,749,537	127,286,556	

BANQUE COMMERCIALE INTERNATIONALE



Payez contre ce chèque non endossable sauf au profit d'un établissement de crédit
Pay against, this non endossable cheque except to a financial institution

Cheque BCI
BCI Banque Commerciale
Internationale

FRANCS CFA

A l'ordre de / To the order of **TRESOR PUBLIC**

FCFA 19.860.019 ^{xx}/_{xx}

Payable au Congo

A / AT **DOLISIE**

Le / The **29.11.2012**

POINTE NOIRE

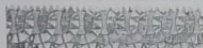
Numéro de compte
37107053897 20
ASIA CONGO INDUSTRIES
AVENUE DE LA FRONTIERE
IMMEUBLE LOBO
POINTE-NOIRE

N° de Chèque / Code guichet

N° 1806/12/2012

⑆3042917⑆3001303000⑆3710705389720⑆

[Signature]
(87)



LA CONGOLAISE DE BANQUE

Capital de 10.000.000.000 F.C.F.A.
Avenue Amilcar CABRAL
BRAZZAVILLE - REPUBLIQUE DU CONGO
RCCM Brazzaville 06/B/58

B.PFCFA ***10.860.925*****

Chèque N°

2254664

CHEQUE CERTIFIE

Payez contre ce chèque non endossable sauf au profit d'un établissement de crédit
Pay against, this non endossable cheque except to a financial institution

⑆10860925⑆

A l'ordre de / To the order of **TRESOR PUBLIC**

Payable à

20341302101

Jonas MASSAMBA

POINTE NOIRE le 29/12/12

AGENCE POINTE NOIRE
AV. GENERAL DE GAULLE
BP 811 POINTE NOIRE
TEL. 94 24 90

CHEQUES DE BANQUE LCB
AVENUE AMILCAR CABRAL
SINO - CONGO FORET

Antoine NDOUMA

⑆2254664⑆3001200105⑆2034130210184⑆

BAMBAMA

[Details](#)[FLEGT](#)[Management](#)[Taxes](#)[Observations](#)

Matthew Steil says

Write something...

[Post](#)

Edouard Kibongui said

Dépassement du quota annuel légal de 15% des exportations des bois en grumes au titre de l'année 2012

VPA Indicator

4.8.1 Processing quota

Associated Legislation

Non respect du quota 85/15 (Code Forestier Art.180)

Edit: [Location](#) | [Photos](#) | [Documents](#) | [Indicators](#) | [Legislation](#) | [Fines](#)

Brad Mulley said

15 Jun 12

Exploitation d'une superficie non autorisée au titre de la coupe annuelle 2012

**VPA Indicator**

4.4.2 Logging within boundaries

Associated Legislation



Brad Mulley said

Exploitation d'une superficie non autorisée au titre de la coupe annuelle 2012

Observation Date:



[RAPPORT N°006/REM/CAGDF/FM](#)

Choose a different report

- VPA indicator
- Link to legislation
- Government Actions
- Attach Photos**
- Attach Documents
- Attach Location

Upload Photos



✕ Delete this observation



Done

Implemented by



CAGDF

Cercle d'Appui à la Gestion



Forests Monitor



Brad Mulley said

Exploitation d'une superficie non autorisée au titre de la coupe annuelle 2012

Observation Date:



RAPPORT N°006/REM/CAGDF/FM

Ch...

VPA indicator

Link to legislati


Upload Photos



Delete this observation

✕ Close



		E 13.624330	Date 2012/06/16
		S 2.598236	Time 08:29:11 (UTC)
		Altitude 584.100 M	Speed 0.13 KPH

✎ Edit details

Done

Implemented by



CAGDF

Cercle d'Appui à la Gestion Durable des



Forests Monitor

Firm: ASIA CONGO INDUSTRIE

Firm: FORALAC

Search Clear

Firm Clear

- Acme Logging, INC (1)
- ADL (6)
- ASIA CONGO INDUSTRIE (16)
- BPL (2)
- CIB (3)
- CIBN (11)
- COFIROIS (7)

Observer Clear

- Brad Mulley (26)
- Edouard Kibongui (17)

Concession Clear

- BAMBAMA (6)
- KOLA (4)
- LOUESSE (11)
- LOUMONGO (5)
- LOUVAKOU (5)
- MATSANGA (4)
- NGONGO-NZAMBI (1)

FLEGT-VPA Indicators Clear

- 4.11.1 Forestry taxes (9)
- 4.6.1 Logging complies with regulations and management plan (9)

Showing: 43 Observations

Download

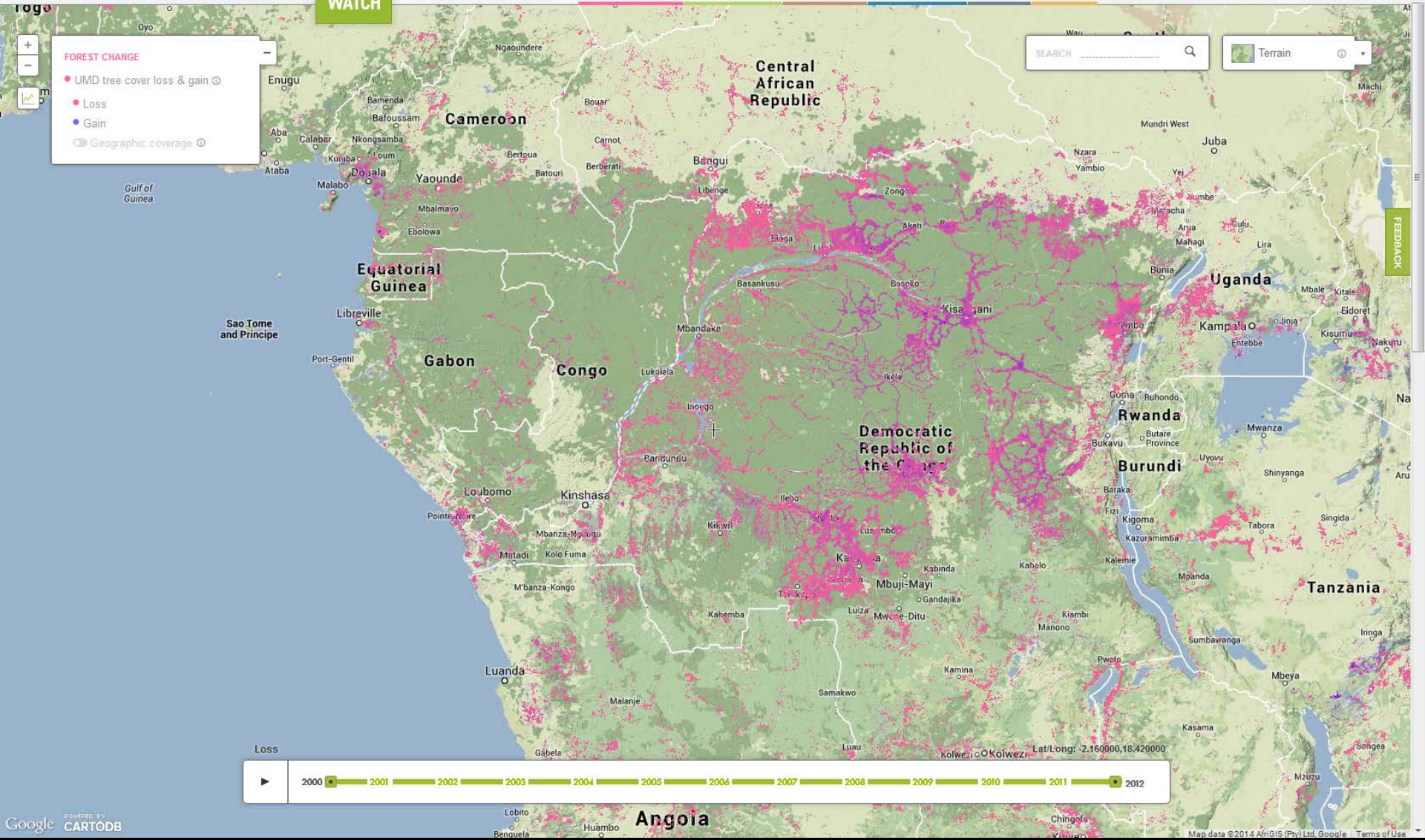
ID	Observation	Observer	Firm	Concession	Observation Date
169	1 Eveus, 4 Louvounga et 1	Edouard Kibongui	FORALAC	LOUESSE	30 Apr 13
156	Dépassement du quota annuel	Edouard Kibongui	ASIA CONGO	LOUVAKOU	11 Apr 13
155	Dépassement du quota annuel	Edouard Kibongui	ASIA CONGO	NGONGO-NZAMBI	11 Apr 13
154	Dépassement du quota annuel	Edouard Kibongui	ASIA CONGO	MATSANGA	11 Apr 13
153	Dépassement du quota annuel	Edouard Kibongui	ASIA CONGO	BAMBAMA	11 Apr 13
144	Interruption et reprise à 1 la	Edouard Kibongui	FORALAC	LOUESSE	10 Apr 13
143	Coupe de 416 pieds, tous, des	Edouard Kibongui	FORALAC	LOUESSE	10 Apr 13
142	Coupe en sus de 182 pieds	Edouard Kibongui	FORALAC	LOUESSE	10 Apr 13
141	Non déclaration des bois	Edouard Kibongui	FORALAC	LOUESSE	10 Apr 13
140	Coupe des arbres des essences	Edouard Kibongui	FORALAC	LOUESSE	10 Apr 13
138	Coupe audela dela validité de	Edouard Kibongui	FORALAC	LOUESSE	10 Apr 13
137	Absence du marteau forestier	Edouard Kibongui	FORALAC	LOUESSE	10 Apr 13
136	Surcharge dans les carnetsde	Edouard Kibongui	FORALAC	LOUESSE	10 Apr 13
135	Les espèces de certaines	Edouard Kibongui	FORALAC	KOLA	10 Apr 13
134	Coupe en sus d'un (1) pieds de	Edouard Kibongui	FORALAC	KOLA	10 Apr 13
133	Coupe de cinq (5) pieds de	Edouard Kibongui	FORALAC	KOLA	10 Apr 13
132	Non mise à jour de carnets de	Edouard Kibongui	FORALAC	KOLA	10 Apr 13
53	Absence des dates d'abattage	Brad Mulley	FORALAC	NKOLA	7 Dec 12
47	L'okoumé 802 découvert	Brad Mulley	FORALAC	NKOLA	6 Aug 12
48	Exploitation de bois d'essence	Brad Mulley	FORALAC	NKOLA	6 Aug 12
49	Fausse déclaration d'essence et	Brad Mulley	FORALAC	NKOLA	6 Aug 12
50	Sous-estimation des volumes	Brad Mulley	FORALAC	NKOLA	6 Aug 12
91	Coupe de 19 m3 d'Eveus	Brad Mulley	FORALAC	LOUMONGO	2 Jul 12
88	Absence des marques de	Brad Mulley	FORALAC	LOUMONGO	21 Jun 12
89	Non déclaration et	Brad Mulley	FORALAC	LOUMONGO	20 Jun 12

FOREST CHANGE

- UMD tree cover loss & gain
- Loss
- Gain
- ◻ Geographic coverage

SEARCH

Terrain

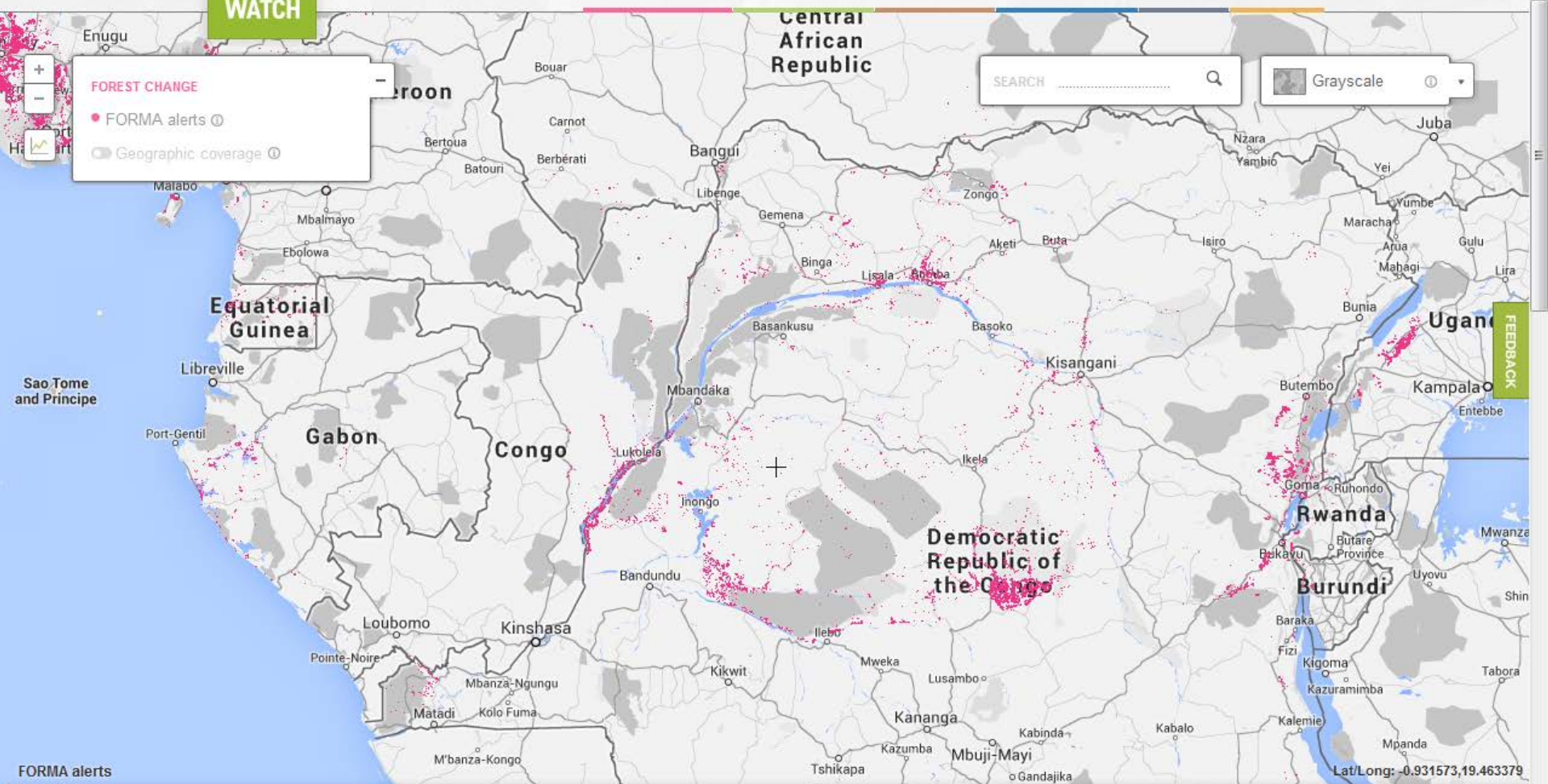


FOREST CHANGE

- FORMA alerts ⓘ
- Geographic coverage ⓘ

SEARCH

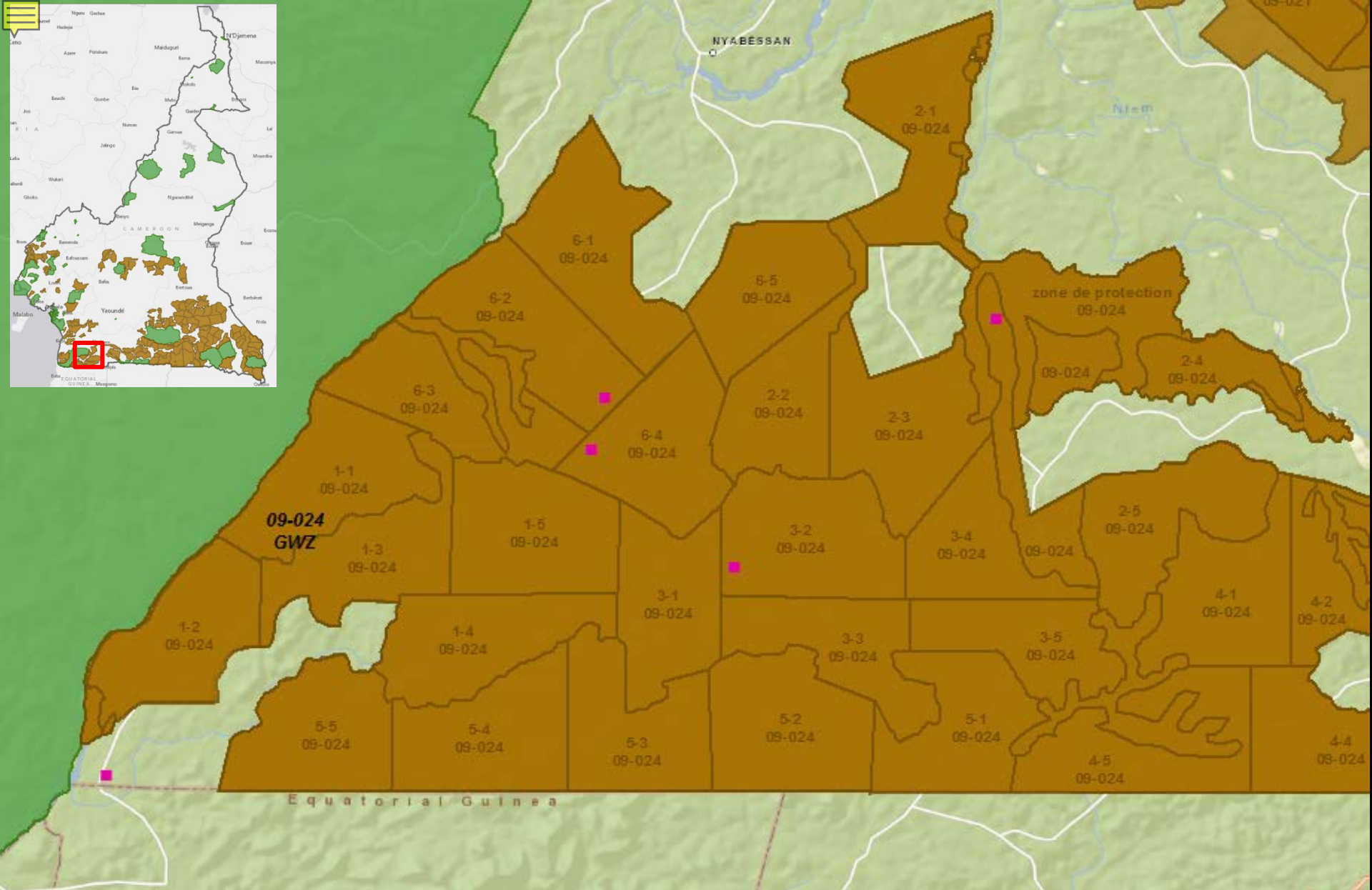
Grayscale



FORMA alerts

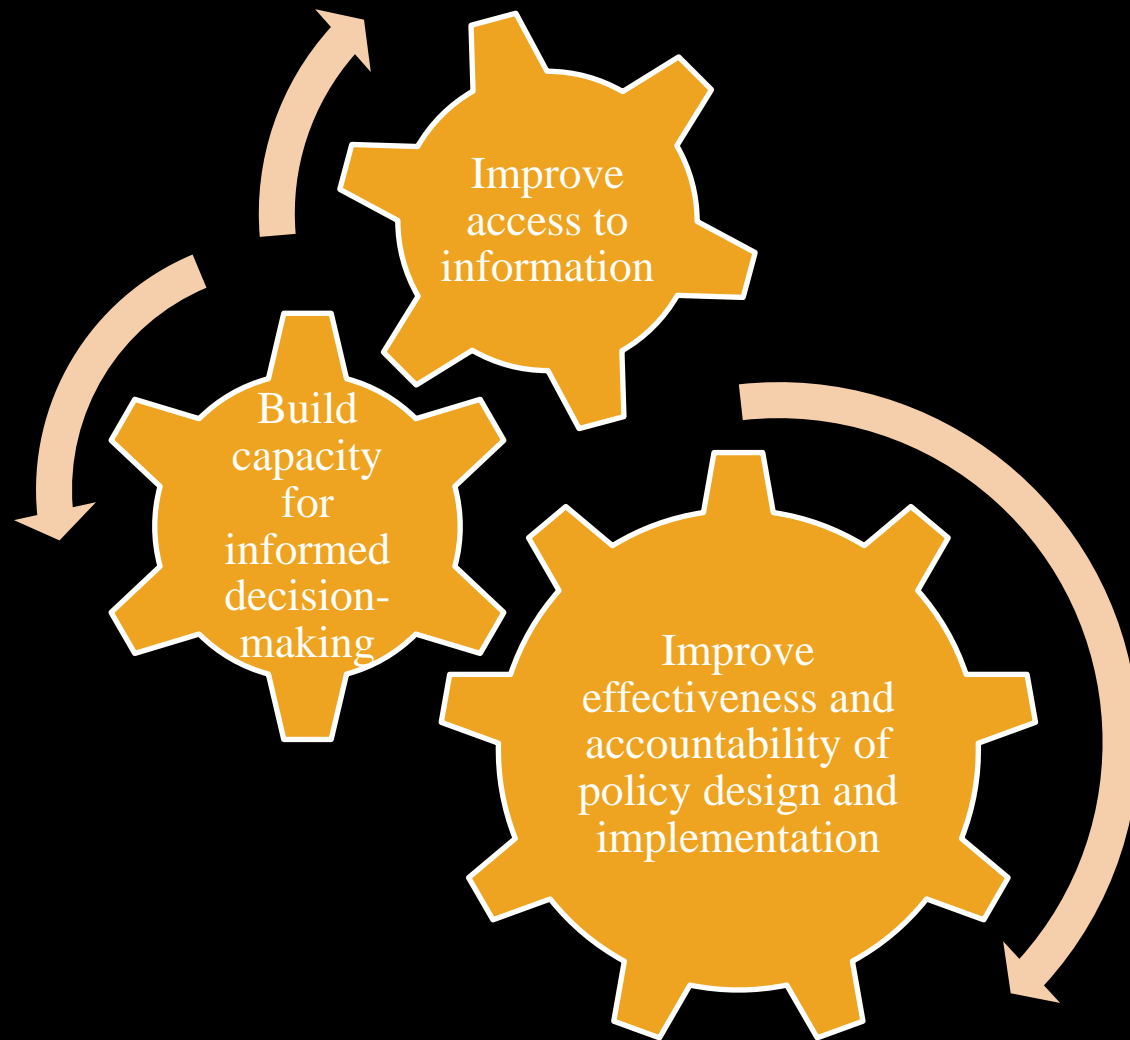


FEEDBACK



Forest cover change January 2010 - May 2013

SCAEMPS: Policy approach





Policy Area 1: REDD+ policies and programs

- Ensuring design of national and sub-national REDD+ programs is transparent, inclusive, and responsive to stakeholder inputs
- Promoting robust social and environmental safeguards as a critical element of REDD+ programs
- Strengthening the enabling environment for good governance of REDD+ (e.g., legal and institutional frameworks)





Policy Area 2: Land use planning and resource allocation

- Improving the quality and coordination of national level land use planning processes
- Enhancing the transparency and accountability of processes to allocate of concessions and other resource use contracts
- Strengthening the legal rights of forest communities and indigenous peoples



Policy Area 3: Forest and biodiversity management

- Addressing gaps in legal frameworks
- Strengthening local management capacity to support decentralization of natural resource governance
- Improving monitoring and enforcement of extractive activities

CARPE III: Recommendations

- Simplest, most effective approach
- Maximize leveraging contribution of each actor
- Ensure activities respond to needs on ground
- “Tied” deliverables between partners
- Engage governments and CSOs from outset
- Use binding agreements (e.g. MOUs)

Thanks!

