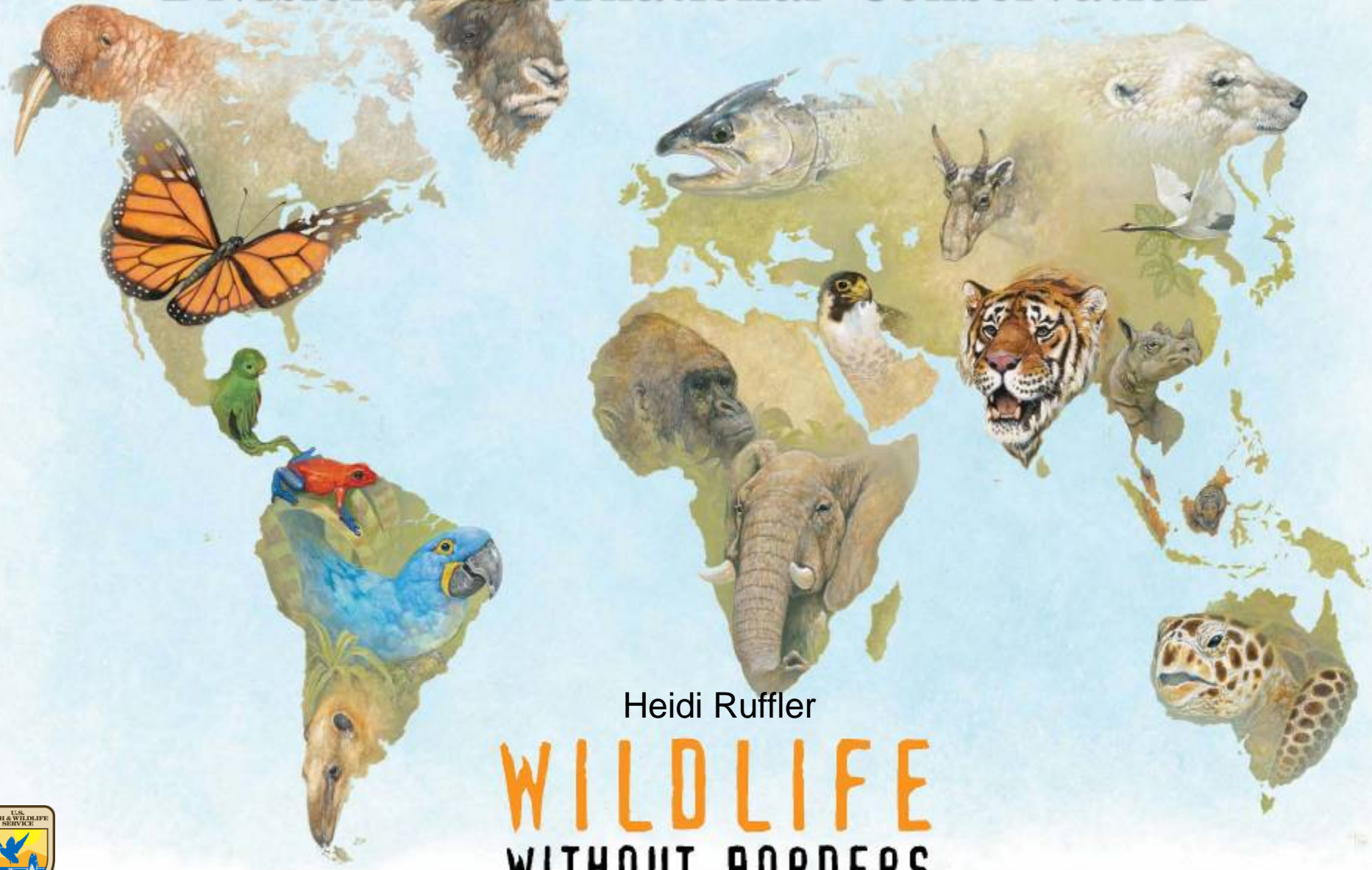


# US Fish and Wildlife Service Division of International Conservation

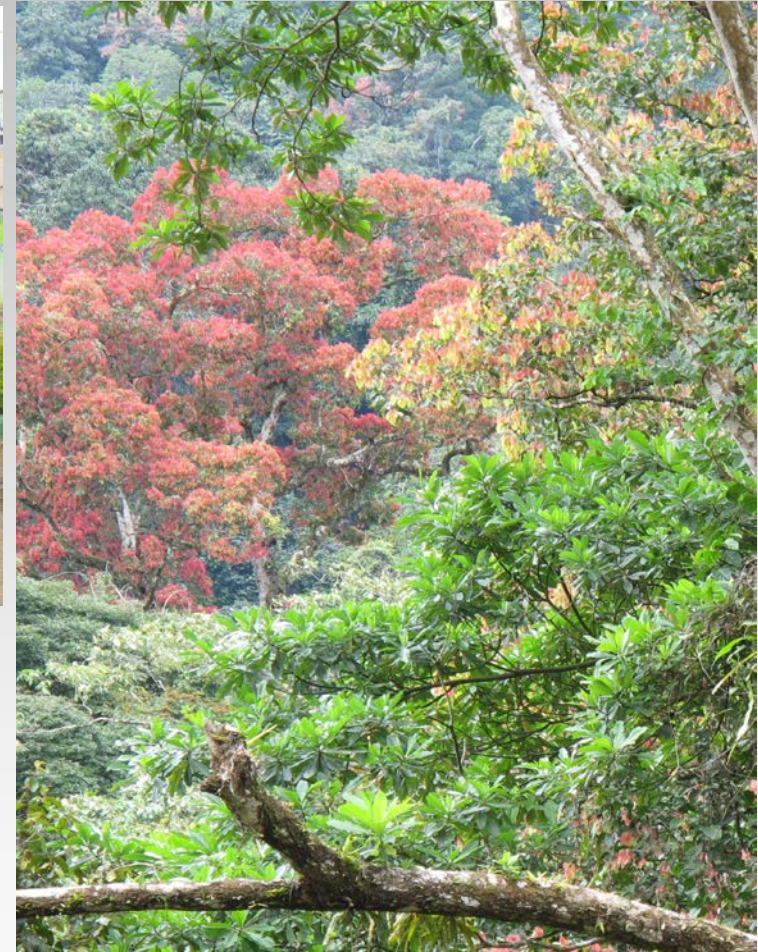


Heidi Ruffler

# WILDLIFE WITHOUT BORDERS



# Monte Alén – Monts de Cristal

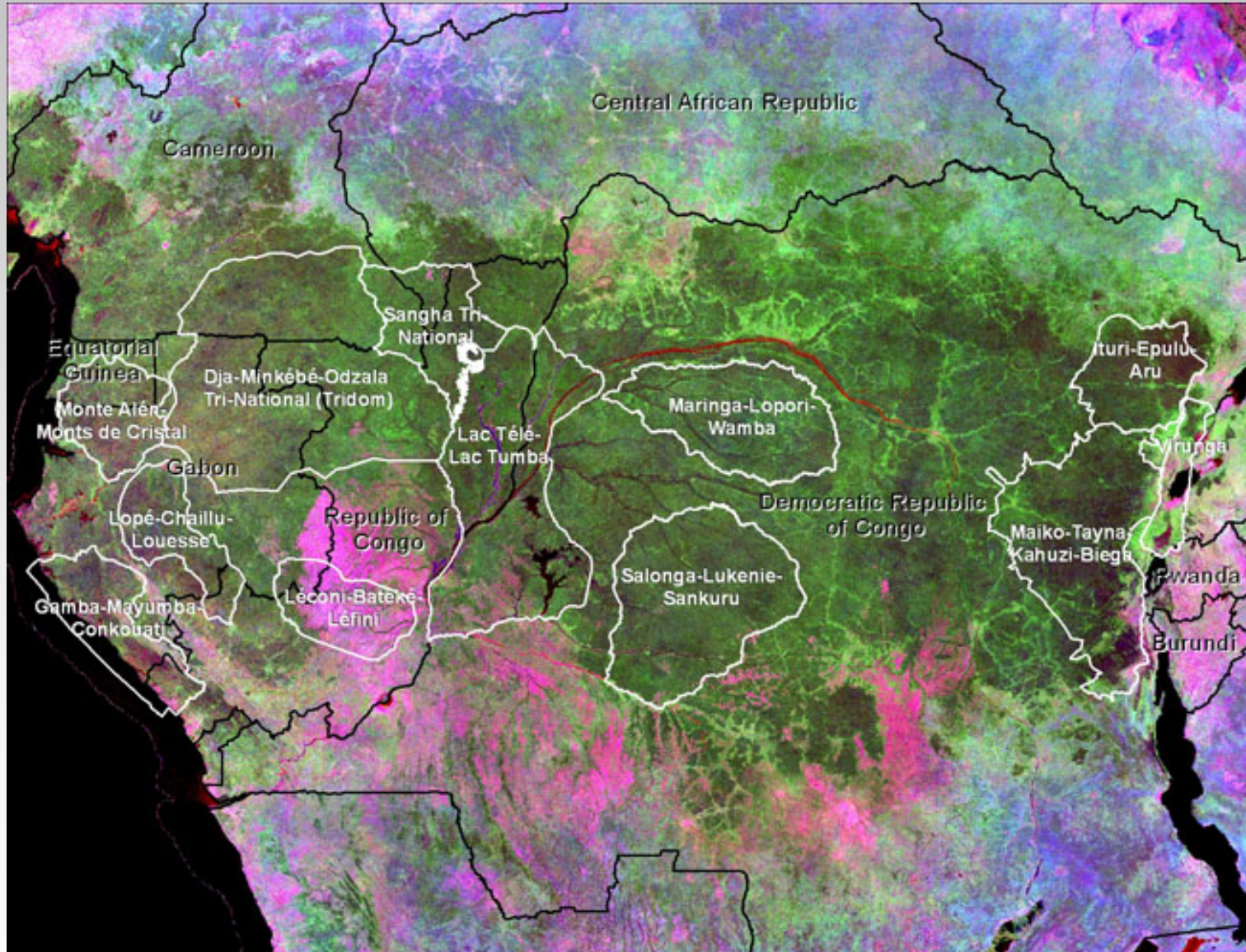


# Presentation Overview

- Background to the Monte Alén – Monts de Cristal Landscape
- Threats
- CARPE 2 achievements
- Beyond CARPE 2



# Background



# Background

## Equatorial Guinea:

### Protected areas:

- Monte Alén (National Park)
- Altos de Nsork (National Park)
- Piedras Nzas (National Monument)
- Rio Muni Estuary (Nature Reserve)

### CBNRM:

- National Forest (proposed)

## INDEFOR-AP, ANDEGE

[Conservation International (CI)]

[Zoological Society of London (ZSL)]



Source: Conservation International



# Background

## Gabon:

### Protected areas:

- Monts de Cristal (National Park) - **ANPN, WCS**

### CBNRM:

- Kougouleu-Medouneu axis in Mbe Basin (KMM) - **WCS**

### Extractive zones:

- Abanga River - **WWF**
- Logging – Rougier - **WWF**
- Mining - **WCS**
- SEEF - **WCS**

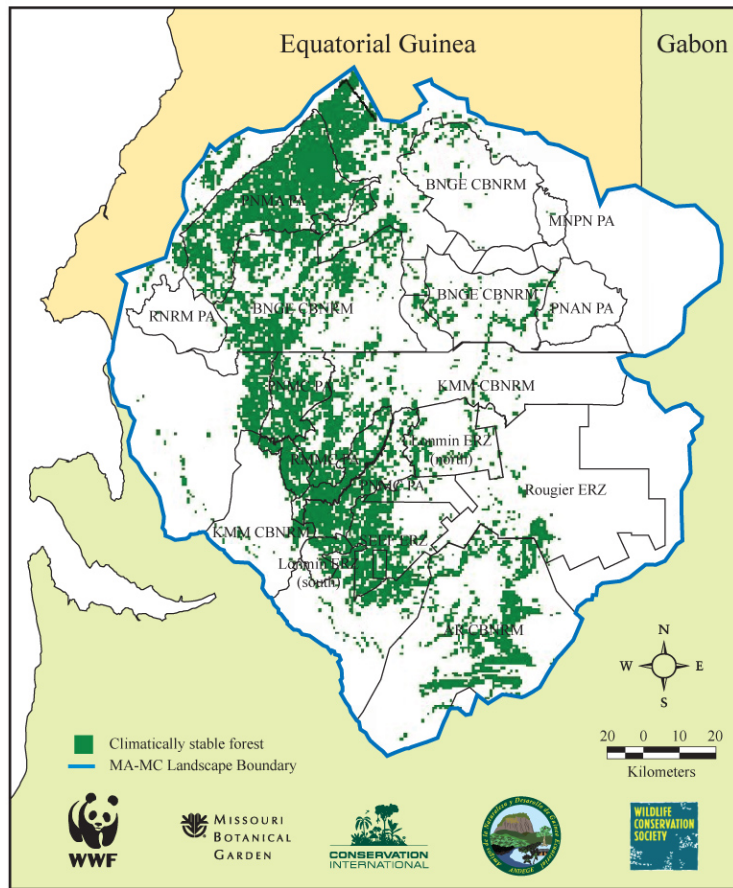


Source: Conservation International

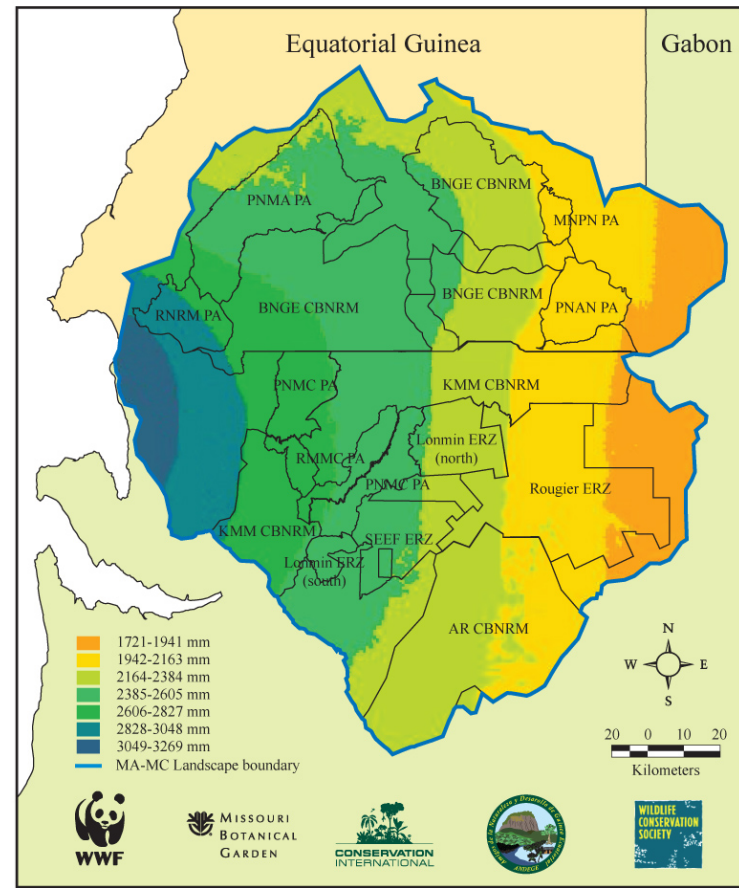


# Background

MA-MC Climatically Stable Forest



Rainfall



# Threats





# Background

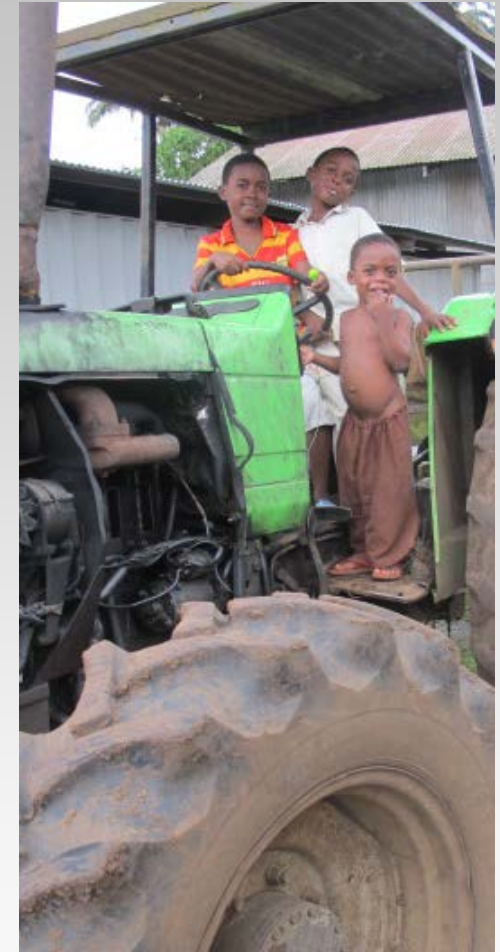
## GDP per person\*

Average annual % change, 2001-10



Sources: IMF; The Economist

\*At constant prices



# Threats

Supply of bushmeat to a Bata market from eight districts, Gabon, Cameroon and the village of Sendje, between two study periods in 2003 and 2010 (Gill, 2010)

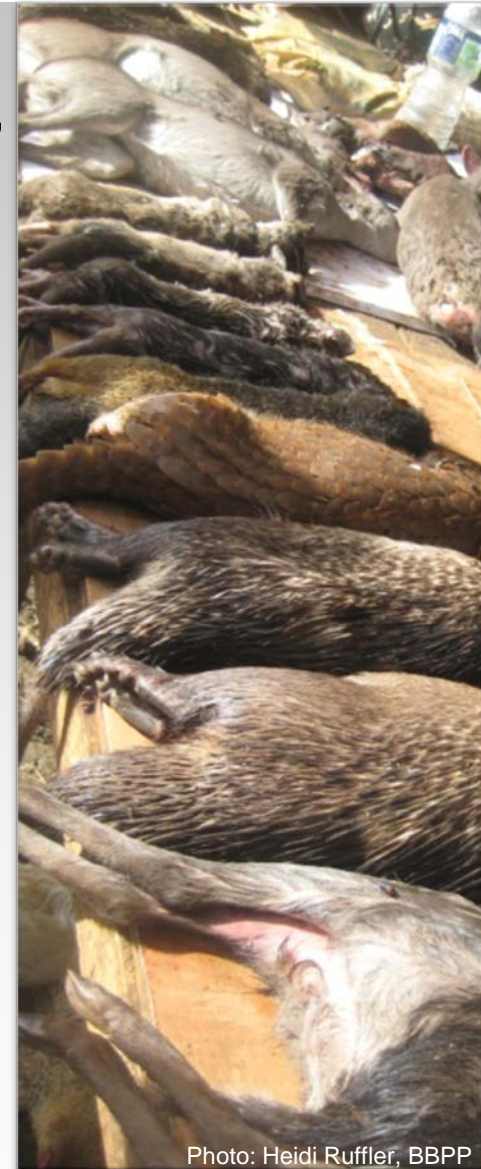
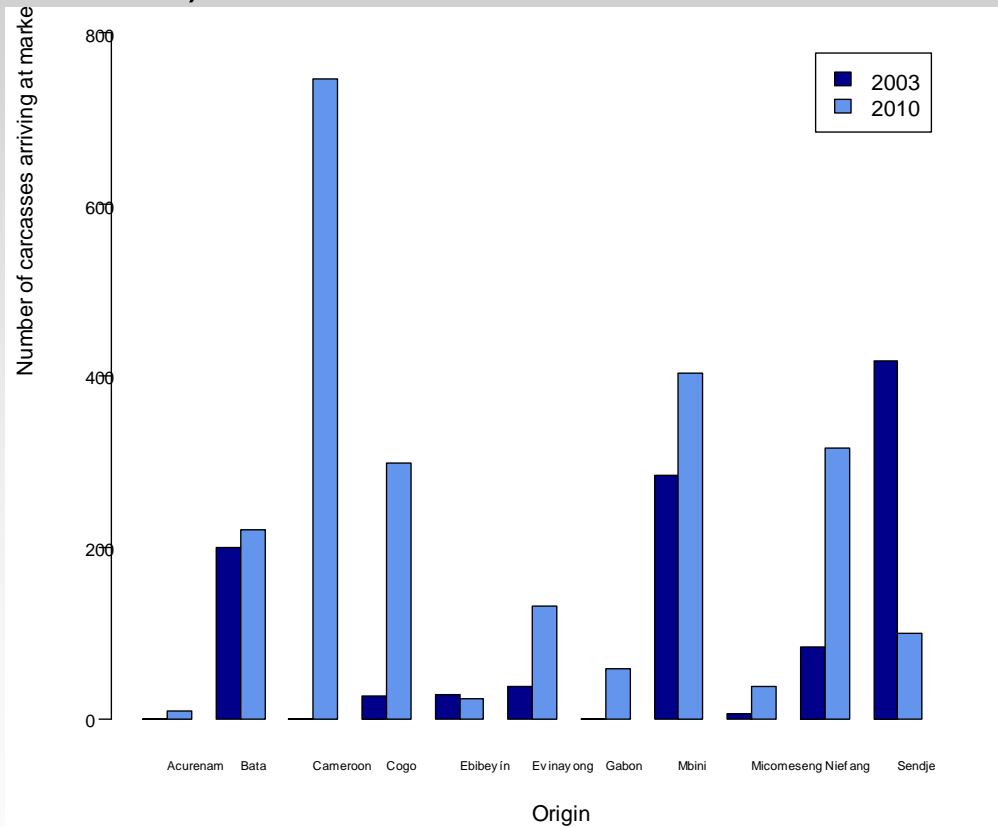


Photo: Heidi Ruffler, BBPP

Source: Gill, D. 2010. Drivers of change in hunter offtake and hunting strategies in Sendje, Equatorial Guinea. MSc thesis, Imperial College London



# CARPE 2 Achievements

## Equatorial Guinea



Monte Alén National Park. Credit: Heidi Ruffler/CI



# CARPE 2 Achievements

## Equatorial Guinea

- **LS-wide:**  
National ape and elephant census\* – CI, MPI, INDEFOR-AP, ANDEGE, UNGE
- **Monte Alén NP and National Forest CBNRM:**  
Alternative livelihood pilot projects – ANDEGE  
Human – elephant conflict research – CI, ANDEGE
- **LS-wide/nationwide:**  
Technical assistance with enforcement of primate hunting ban – CI, ZSL
- **LS-wide/nationwide:**  
Environmental communications campaign – CI, INDEFOR-AP, ANDEGE, ZSL, AECID



\* Funding from U.S. Fish and Wildlife Service, Margot Marsh Biodiversity Foundation, private donor and USAID/CARPE)



# CARPE 2 Achievements

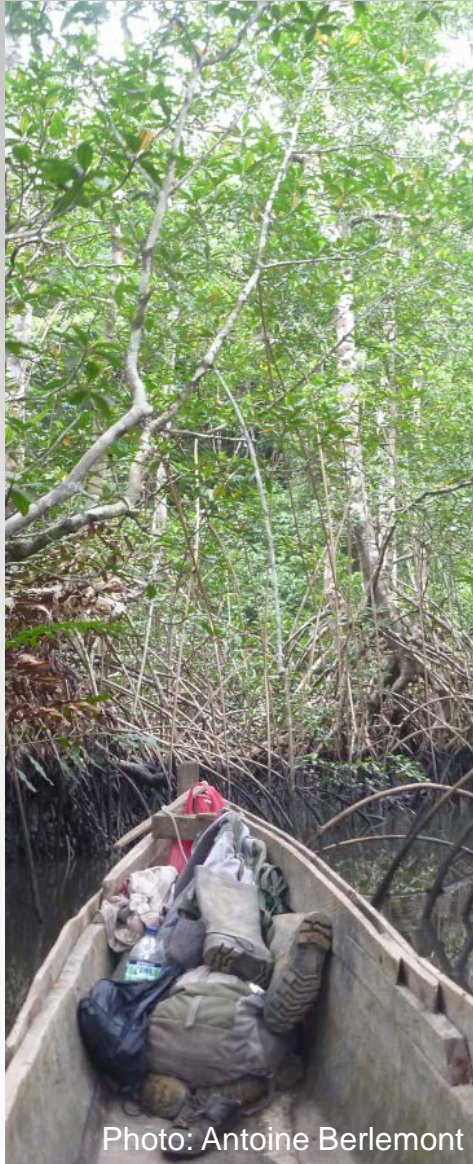
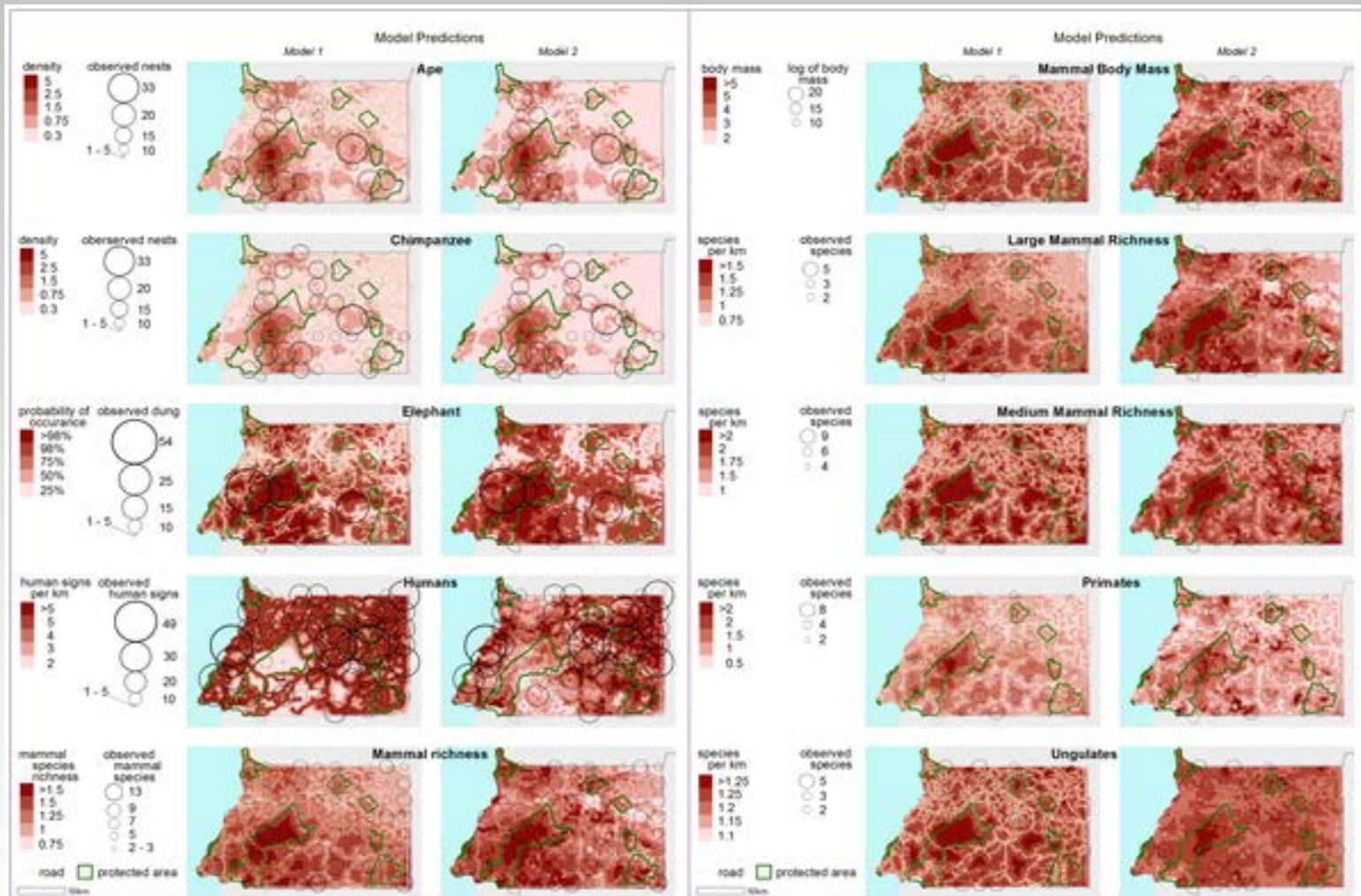


Photo: Antonio Grunfeld



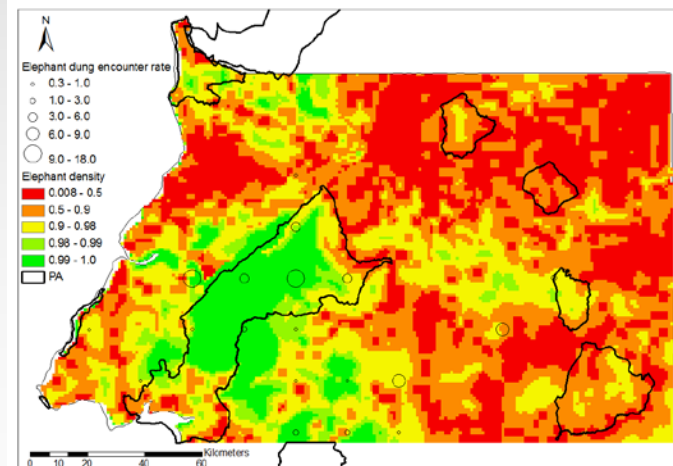
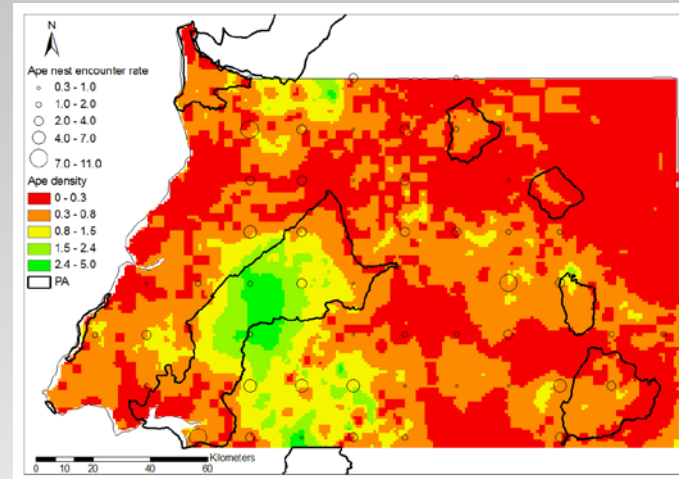
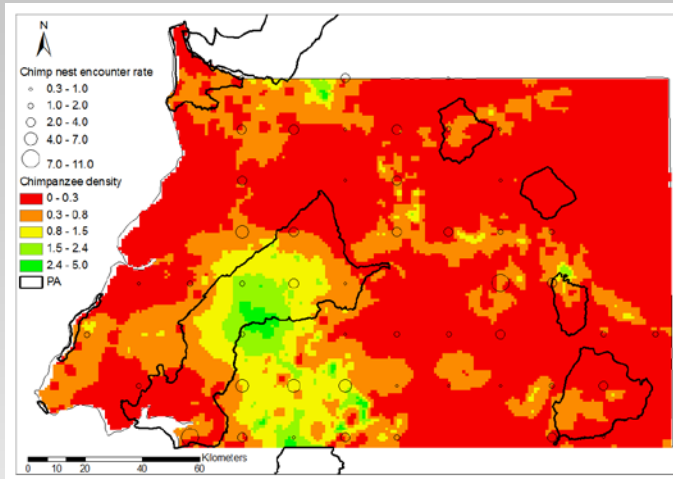
# CARPE 2 Achievements



Murai M, Ruffler H, Berlemont A, Campbell G, et al. (2013) Priority Areas for Large Mammal Conservation in Equatorial Guinea. PLoS ONE 8(9): e75024. doi:10.1371/journal.pone.0075024

<http://www.plosone.org/article/info:doi/10.1371/journal.pone.0075024>

# CARPE 2 Achievements



Top, left: Density distribution of chimpanzees and nest encounter rates per km<sup>2</sup> along the transects

Top, right: Density distribution of apes and nest encounter rates per km<sup>2</sup>

Left: Density distribution of elephants and dung encounter rates per km<sup>2</sup> along line transects. (Source: MPI)



# CARPE 2 Achievements



Photo: Gabriel Ngua, ANDEGE





# CARPE 2 Achievements



# CARPE 2 Achievements



Photos: Juliet Wright/ZSL



# CARPE 2 Achievements

## Gabon



Monts de Cristal National Park. Credit: Tariq Stévant/MBG



# CARPE 2 Achievements

## Gabon

- **Monts de Cristal NP:**  
Support towards monitoring of ecoguards - **WCS, ANPN**
- **KMM:**  
Awareness raising and alternative livelihood projects - **WCS**
- **Abanga:**  
Manatee monitoring – **WWF**
- **Rougier:**  
Implementation of management plan and anti-poaching patrols – **WWF**
- **Mining:**  
Establishment of a management plan – **WCS**
- **SEEF:**  
Elaboration of an anti-poaching protocol – **WWF**  
Botanical surveys - **MBG**

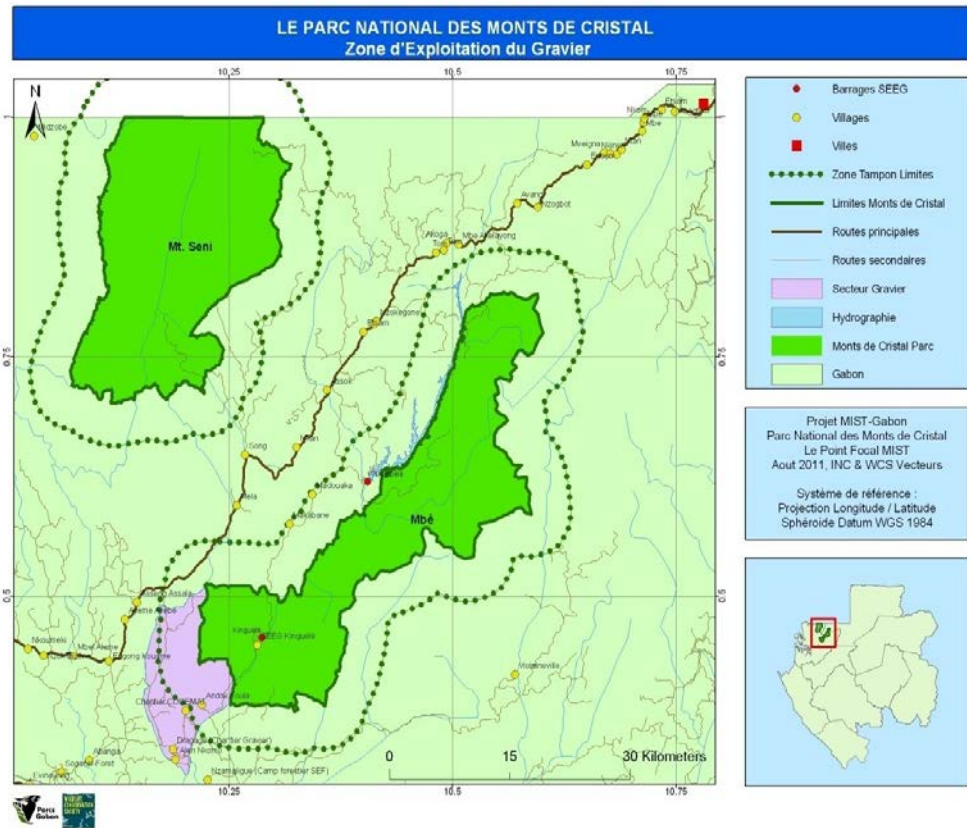


# CARPE 2 Achievements



Above: MIST training. Credit: Martin Hega/WCS

Above: Monts de Cristal planning meeting. Credit: Rawlings Essame Essono



Left: The orchid collection at Tchimbélé, Monts de Cristal. Credit: Tariq Stévant/MBG



# CARPE 2 Achievements



Left: Alternative livelihood pilot project. Credit: Martin Hega/WCS

Below: Law enforcement support. Credit: ANPN



Left: Example of outreach activities - a sermon on the benefits of conservation in a local church. Credit: Martin Hega/WCS



# CARPE 2 Achievements



Above, left: Manatee meat being sold on local market.  
Credit: Stephane Louembet/WWF

Above, right: Inundated forest along the Abanga.  
Credit: Stephane Louembet/WWF

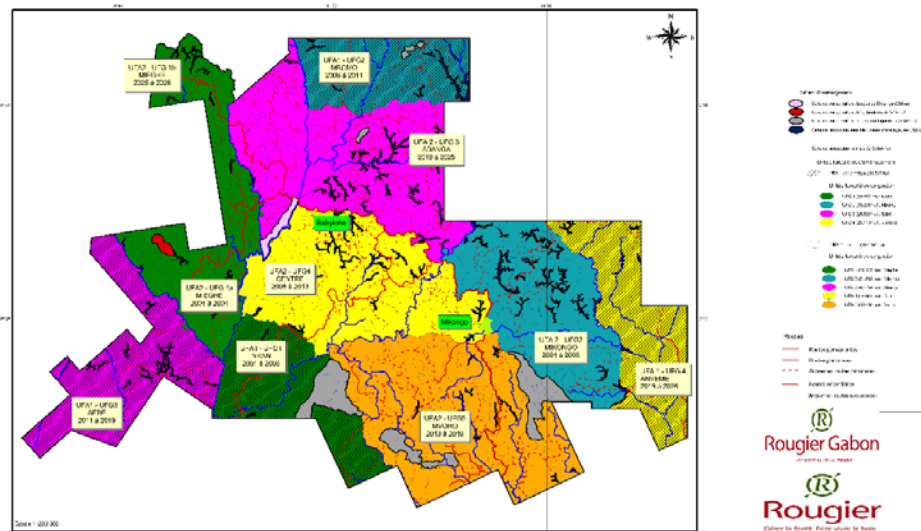


Left: Opening ceremony for the signing of the MOU on the Conservation of Manatees in the Abanga River and Associated Lakes in August 2010.  
Credit: WWF



# CARPE 2 Achievements

Carte d'aménagement de la CFAD du Haut-Abanga  
Surface totale aménagée 288 626 ha



  
**Rougier Gabon**

Une société du groupe Rougier

**RÉSUMÉ PUBLIC**

**PLAN D'AMÉNAGEMENT  
PÉRIODE 2001-2026**

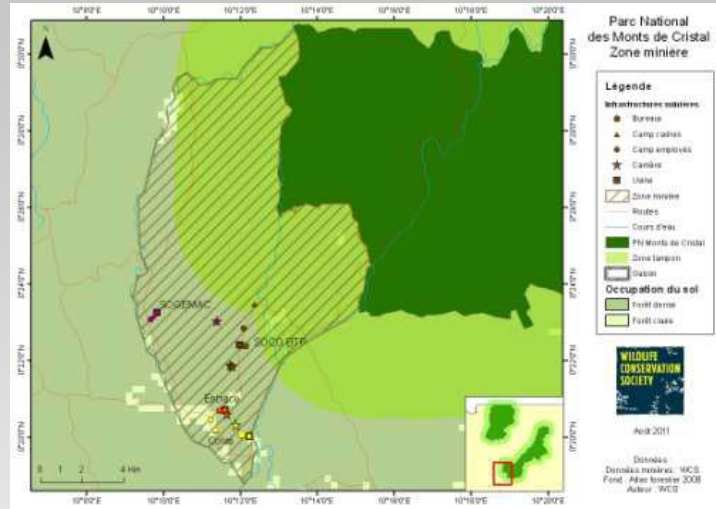


Right: Control for bushmeat and arms on a Rougier truck.  
Credit: Stephane Louembet/WWF

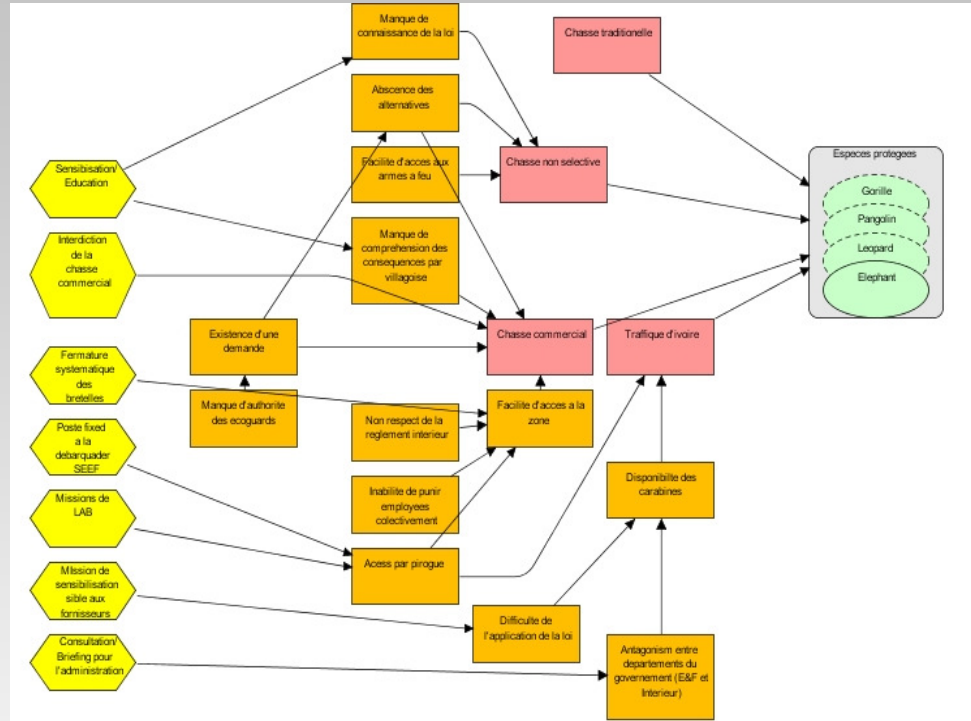
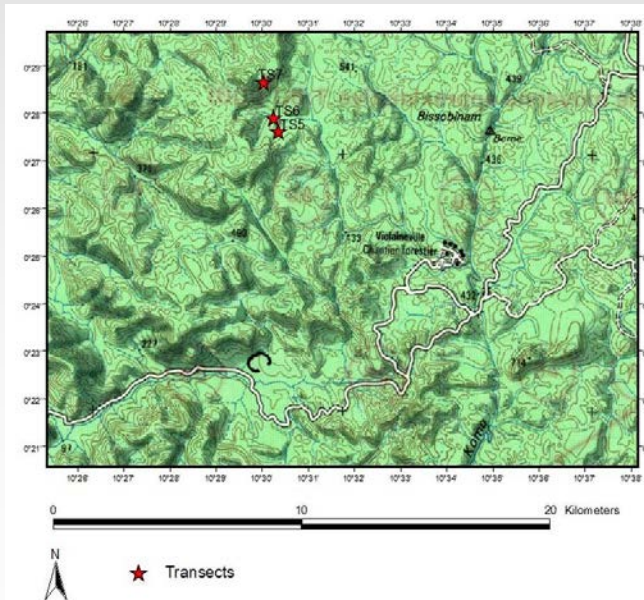
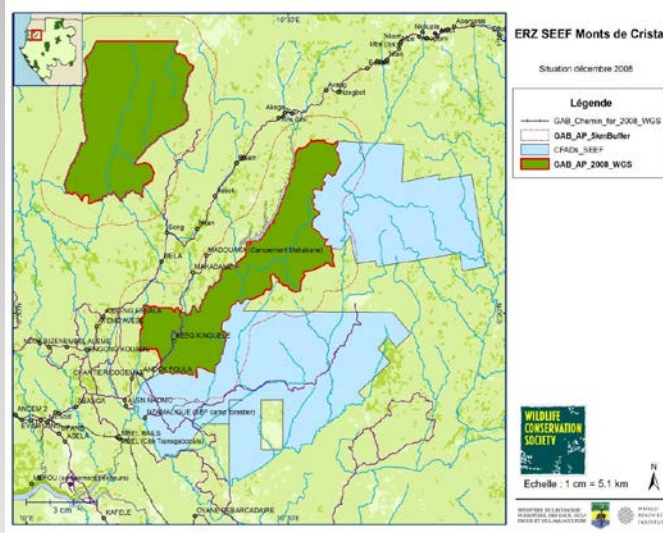




# CARPE 2 Achievements



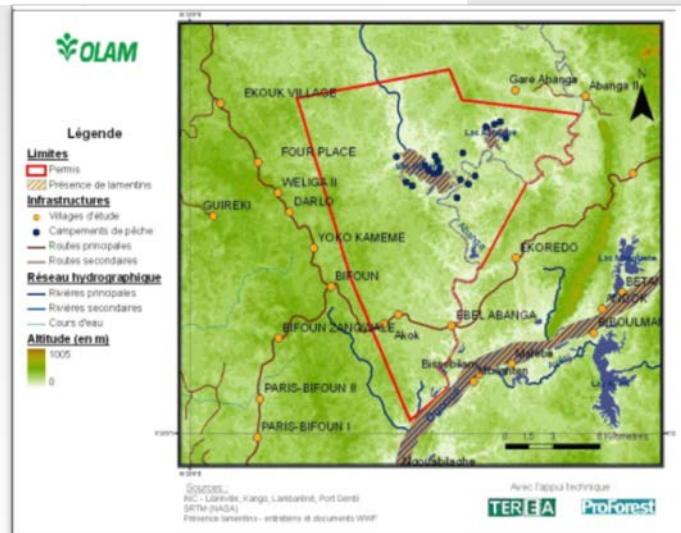
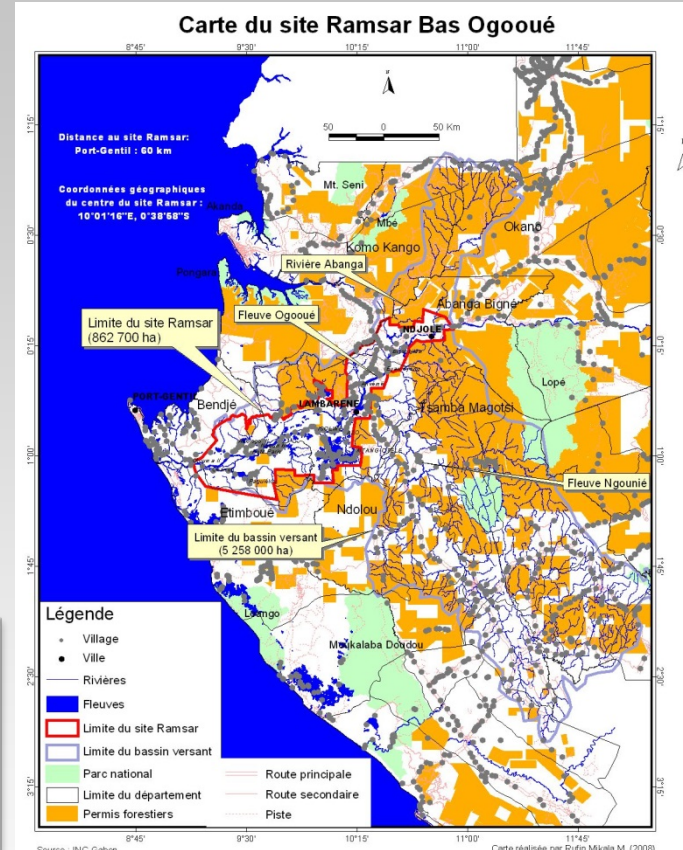
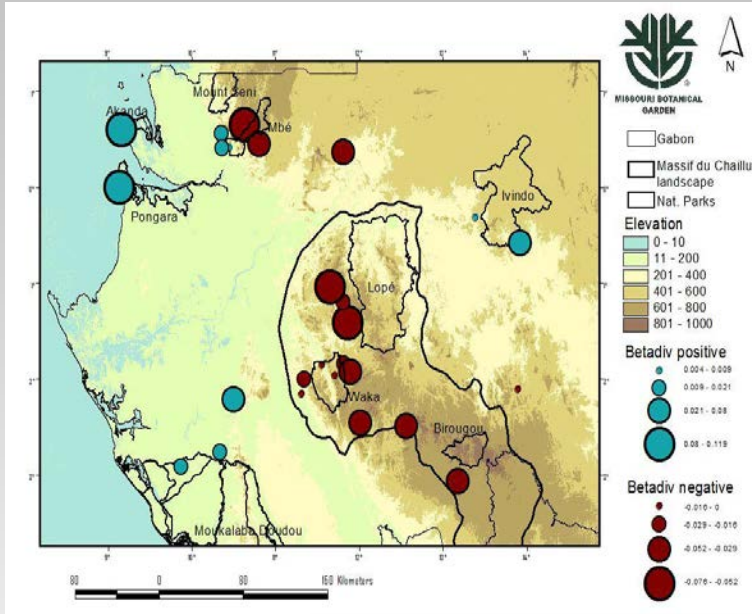
# CARPE 2 Achievements



Photo, left: New species of Tridactyle (Orchidaceae) collected in the SEEF concession. Credit: MBG



# Beyond CARPE 2



# Beyond CARPE 2



# Beyond CARPE 2



Photo: INDEFOR-AP



# Beyond CARPE 2



Photo: Equatorial Guinea Bird Initiative



Photo: Equatorial Guinea Bird Initiative



# Thank you!



Questions?  
[heidi\\_ruffler@fws.gov](mailto:heidi_ruffler@fws.gov)

Photos from Heidi Ruffler/Conservation International, unless otherwise noted.

